

LOC I-PIA <b>109.9</b>	APP CRS <b>309°</b>	Rwy Ldg <b>10104</b> TDZE <b>650</b> Apt Elev <b>661</b>
---------------------------	------------------------	--

# ILS or LOC RWY 31

GENERAL DOWNING - PEORIA INTL (PIA)

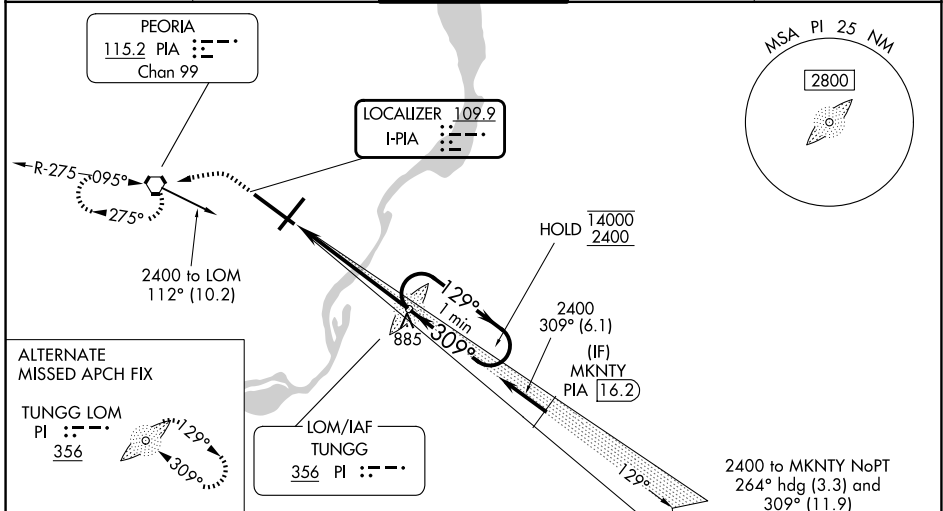
DME required for procedure entry.

When local altimeter setting not received, use AAA altimeter setting: increase S-ILS 31 DA to 939 feet; increase all MDAs 100 feet and S-LOC 31 visibility CAT C/D/E to 1 1/4 SM and Circling visibility Cat C 1/4 SM and Cat D 1/2 SM. Circling Rwy 13, 31 NA at night. For inop ALS, when using AAA altimeter setting, increase S-ILS 31 all Cats visibility to RVR 4500, S-LOC 31 visibility Cats C/D/E to 1 1/2 SM. For inop ALS, increase S-ILS 31 Cat E visibility to RVR 4000 and S-LOC 31 Cats C/D/E to 1 1/2 SM. DME from PIA VORTAC. DME use requires simultaneous reception of I-PIA and PIA DME. \* RVR 1800 authorized with the use of FD or AP or HUD to DA. (NA when using AAA altimeter setting).

MALSR

MISSED APPROACH: Climb to 1200 then climbing left turn to 2400 direct PIA VORTAC and hold, continue climb-in-hold to 2400.

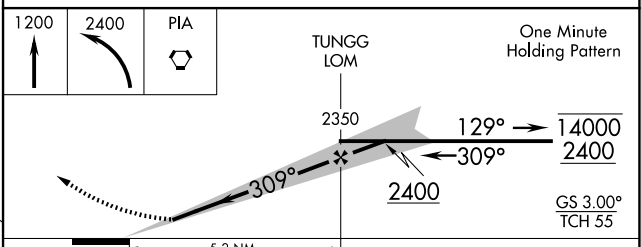
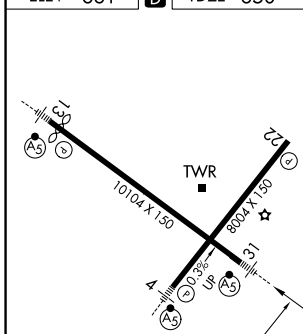
ATIS <b>126.1 282.2</b>	SAINT LOUIS APP CON <b>125.8 269.2</b>	PEORIA TOWER <b>124.0 353.85</b>	GND CON <b>121.85 348.6</b>	CLNC DEL <b>124.675 317.55</b>
----------------------------	---	-------------------------------------	--------------------------------	-----------------------------------



ALTERNATE MISSED APCH FIX

TUNGG LOM  
PI 356

ELEV 661	<b>D</b>	TDZE 650
----------	----------	----------



CATEGORY	A	B	C	D	E
S-ILS 31 *	850/24		200 (200-1/2)		
S-LOC 31	1120/24	470 (500-1/2)	1120/50	470 (500-1)	
CIRCLING	1160-1	499 (500-1)	1180-1 1/2 519 (600-1 1/2)	1400-2 1/4 739 (800-2 1/4)	1680-3 1019 (1100-3)

HIRL Rwy 4-22 and 13-31  
FAF to MAP 5.2 NM

Knots	60	90	120	150	180
Min:Sec	5:12	3:28	2:36	2:05	1:44

EC-3, 11 JUN 2026 to 09 JUL 2026

EC-3, 11 JUN 2026 to 09 JUL 2026