

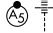
WAAS CH <b>56210</b> <b>W04A</b>	APP CRS <b>041°</b>	Rwy Ldg TDZE Apt Elev	<b>7826</b> <b>652</b> <b>661</b>
--	------------------------	-----------------------------	---

# RNAV (GPS) RWY 4

GENERAL DOWNING - PEORIA INTL (PIA)

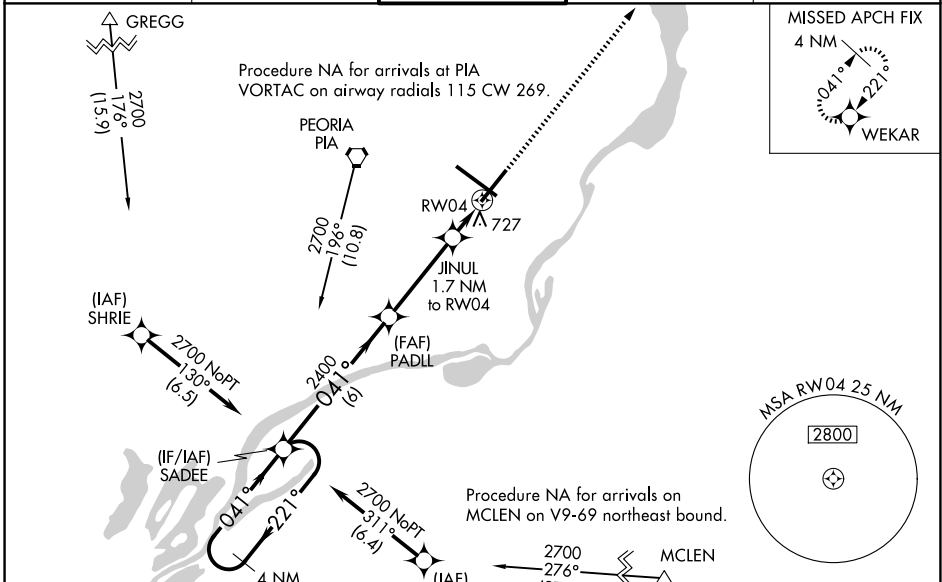
**RNP APCH.**

▼ For uncompensated Baro-VNAV systems, LNAV/VNAV NA below -19°C or above 54°C.  
 ▲ VDP and Baro-VNAV NA with Logan County altimeter setting. When local altimeter setting not received, use Logan County altimeter setting and increase all DA 89 feet and all MDA 100 feet, increase LNAV/VNAV all Cats visibility 1/8 mile, LNAV Cat C and D visibility 1/4 mile, and Circling Cat C 1/4 mile and Cat D 1/2 mile. For inoperative MALSR using Logan County altimeter setting, increase LPV all Cats visibility to 1 mile. For inop ALS, increase LNAV Cat C/D visibility to 1 SM. Circling Rwy 13, 31 NA at night.

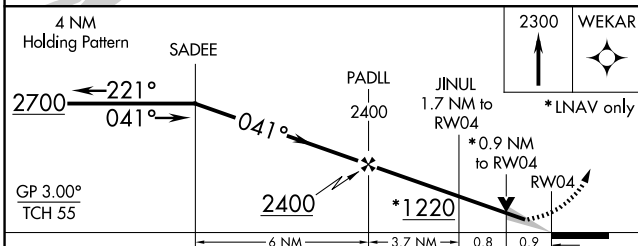
MALSR 

MISSED APPROACH: Climb to 2300 direct WEKAR and hold.

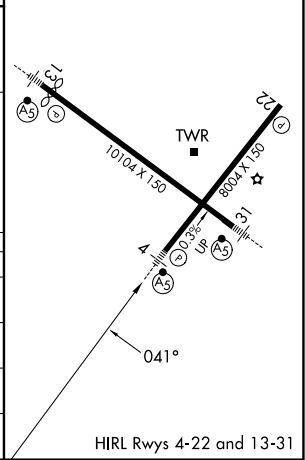
ATIS <b>126.1 282.2</b>	SAINT LOUIS APP CON <b>125.8 269.2</b>	PEORIA TOWER <b>124.0 353.85</b>	GND CON <b>121.85 348.6</b>	CLNC DEL <b>124.675 317.55</b>
----------------------------	---	-------------------------------------	--------------------------------	-----------------------------------



ELEV 661	<b>D</b>	TDZE 652
----------	----------	----------



CATEGORY	A	B	C	D
LPV DA		857-1/2	205 (200-1/2)	
LNAV/VNAV DA		905-1/2	253 (300-1/2)	
LNAV MDA	1000-1/2	348 (400-1/2)	1000-5/8	348 (400-5/8)
CIRCLING	1160-1	499 (500-1)	1180-1 1/2 519 (600-1/2)	1400-2 1/4 739 (800-2/4)



EC-3, 11 JUN 2026 to 09 JUL 2026

EC-3, 11 JUN 2026 to 09 JUL 2026