

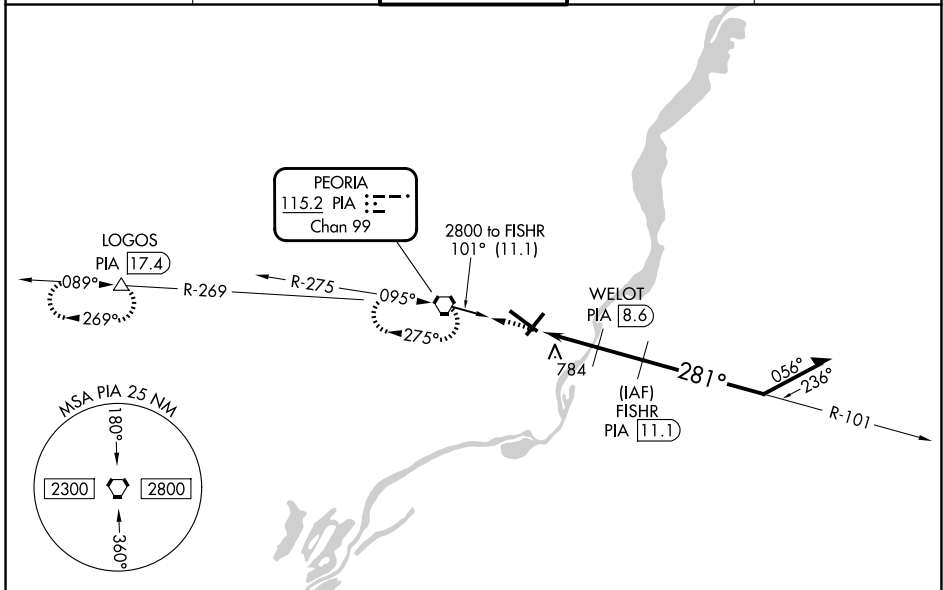
VORTAC PIA 115.2 Chan 99	APP CRS 281°	Rwy Ldg 10104 TDZE 650 Apt Elev 661
--	------------------------	--

VOR Z or TACAN Z RWY 31

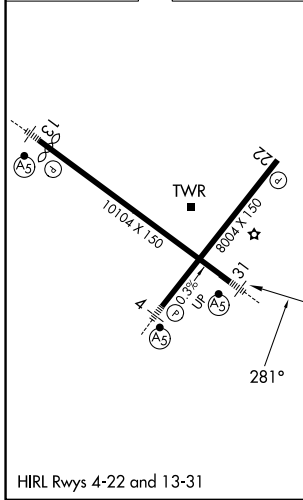
GENERAL DOWNING - PEORIA INTL(PIA)

DME required.	MALSRL 	MISSED APPROACH: Climb to 2800 direct PIA VORTAC and hold, continue climb-in-hold to 2800. (TACAN aircraft continue on PIA VORTAC R-269 to LOGOS/PIA 17.4 DME and hold west, right turn, 089° inbound).
<p>▼ Rwy 31 helicopter visibility reduction below RVR 5000 NA. ▲ Inop table does not apply. Straight-in and Circling Rwy 31 NA at night. Circling Rwy 13 NA at night. When local altimeter setting not received, use AAA altimeter setting; increase all MDAs 100 feet and Circling visibility Cat C/D ½ SM.</p>		

ATIS 126.1 282.2	SAINT LOUIS APP CON 125.8 269.2	PEORIA TOWER 124.0 353.85	GND CON 121.85 348.6	CLNC DEL 124.675 317.55
----------------------------	---	-------------------------------------	--------------------------------	-----------------------------------



ELEV 661	D	TDZE 650
-----------------	----------	-----------------



2800	PIA	FISHR PIA 11.1	Remain within 10 NM	
2800	PIA	WELOT PIA 8.6		
2600	PIA 5.1	1800	3.00° TCH 55	
3.5 NM		2.5 NM		
CATEGORY	A	B	C	D
S-31	1040/55	390 (400-1)	1040/60	390 (400-1¼)
CIRCLING	1160-1	499 (500-1)	1180-1½ 519 (600-1½)	1400-2¼ 739 (800-2¼)

EC-3, 11 JUN 2026 to 09 JUL 2026

EC-3, 11 JUN 2026 to 09 JUL 2026