

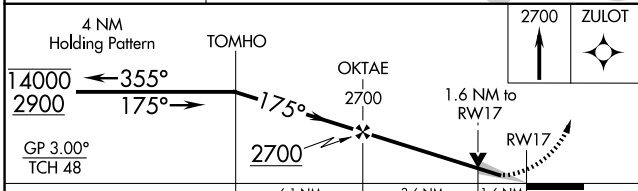
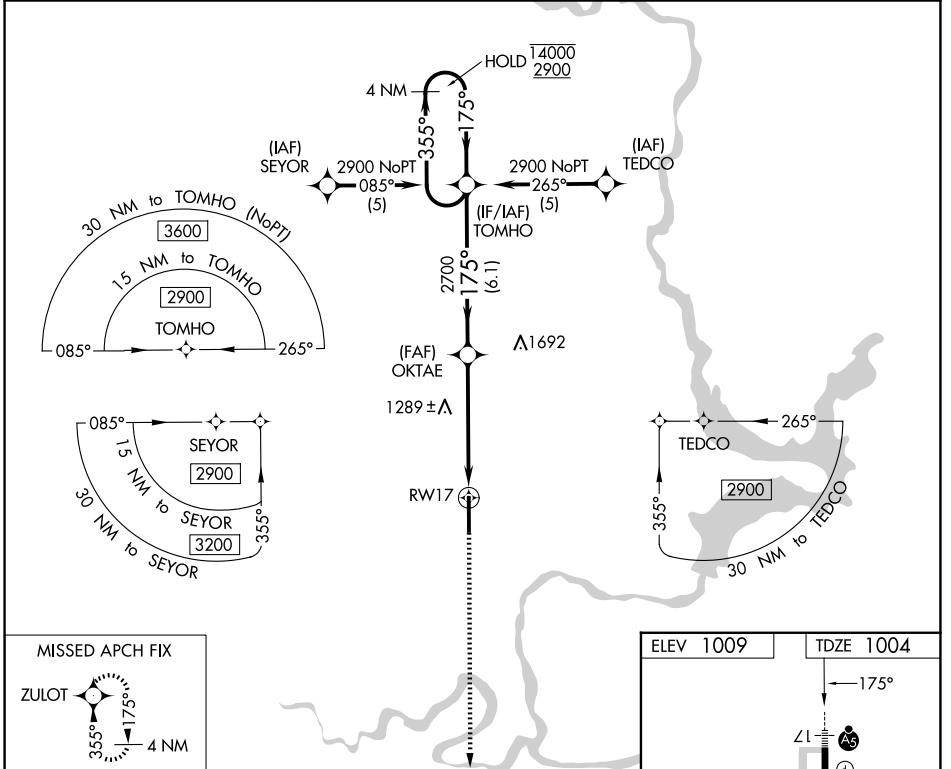
WAAS CH 50408 W17A	APP CRS 175°	Rwy Ldg TDZE Apt Elev 7201 1004 1009
--	------------------------	--

RNAV (GPS) RWY 17

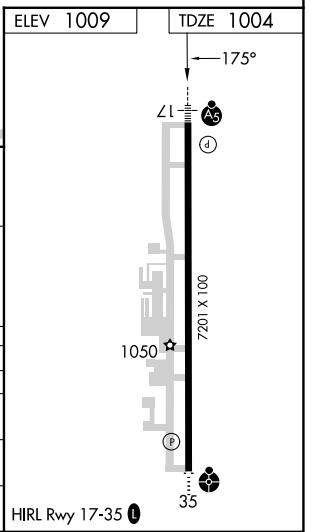
PONCA CITY RGNL (PNC)

RNP APCH - GPS.	MALSR 	MISSED APPROACH: Climb to 2700 direct ZULOT and hold.
For uncompensated Baro-VNAV systems, LNAV/VNAV NA below -16°C or above 54°C. For inop ALS increase LPV visibility all Cats to 7/8 SM.		

ASOS 134.075	KANSAS CITY CENTER 127.8 319.1	UNICOM 123.0 (CTAF) 0
------------------------	--	---------------------------------



4 NM Holding Pattern	TOMHO	OKTAE	2700	1.6 NM to RWY17	ZULOT
GP 3.00° TCH 48	← 355°	← 175°	← 175°		
	6.1 NM	3.6 NM	1.6 NM		
CATEGORY	A	B	C	D	
LPV DA		1279-1/2	275 (300-1/2)		
LNAV/VNAV DA		1330-1/2	326 (400-1/2)		
LNAV MDA	1540-1/2	536 (600-1/2)	1540-1	536 (600-1)	
CIRCLING	1540-1 531 (600-1)	1580-1 571 (600-1)	1800-2 1/4 791 (800-2 1/4)	1880-2 3/4 871 (900-2 3/4)	



SC-1, 11 JUN 2026 to 09 JUL 2026

SC-1, 11 JUN 2026 to 09 JUL 2026