


WAAS CH 93808 W35A	APP CRS 355°	Rwy Ldg 7201 TDZE 1008 Apt Elev 1009
--	------------------------	---

RNAV (GPS) RWY 35

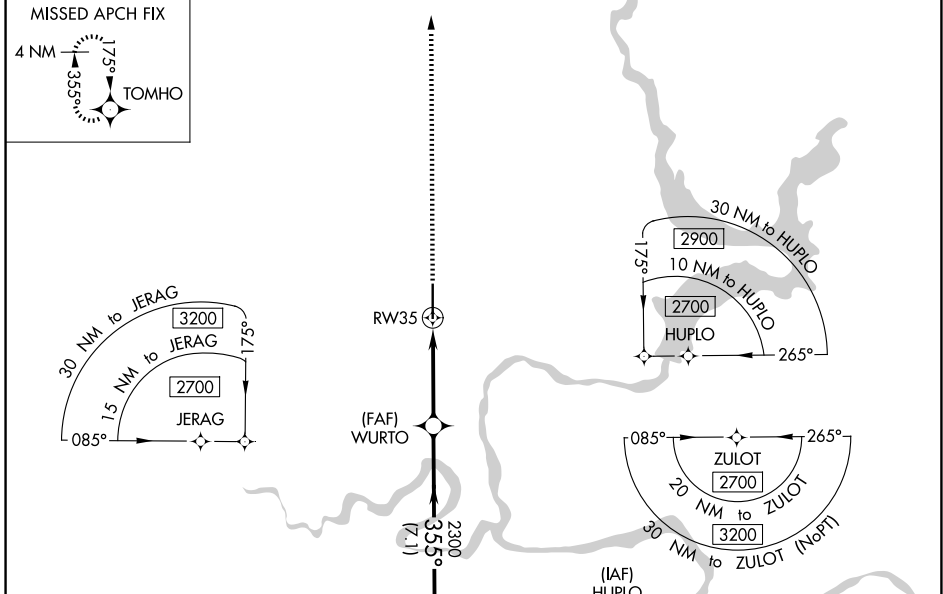
PONCA CITY RGNL (PNC)

RNP APCH - GPS.

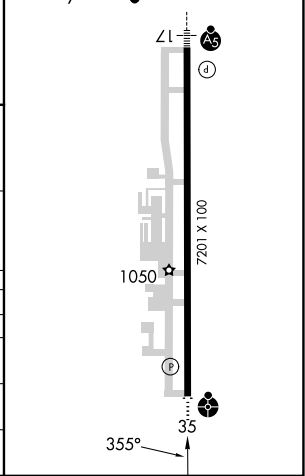
▼ For uncompensated Baro-VNAV systems, LNAV/VNAV NA below -16°C or above 54°C. Baro-VNAV and VDP NA when using WLD altimeter setting. When local altimeter setting not received, use WLD altimeter setting and increase LPV DA to 1377 feet and all visibilities ¼ SM. Increase LNAV/VNAV DA to 1560 feet and all visibilities ⅓ SM. Increase all MDAs 100 feet and LNAV visibility Cat C/D ⅓ SM, and Circling visibility Cat C/D ½ SM.

ODALS
 MISSED APPROACH: Climb to 2800 direct TOMHO and hold.

ASOS 134.075	KANSAS CITY CENTER 127.8 319.1	UNICOM 123.0 (CTAF) 
------------------------	--	---



ELEV 1009	TDZE 1008
-----------	-----------



CATEGORY	A	B	C	D
LPV DA		1295-¾	287 (300-¾)	
LNAV/VNAV DA		1478-1¼	470 (500-1¼)	
LNAV MDA	1540-¾	532 (600-¾)	1540-1⅛	532 (600-1⅛)
CIRCLING	1540-1 531 (600-1)	1580-1 571 (600-1)	1800-2¼ 791 (800-2¼)	1880-2¾ 871 (900-2¾)

SC-1, 11 JUN 2026 to 09 JUL 2026

SC-1, 11 JUN 2026 to 09 JUL 2026