

PONCA CITY, OKLAHOMA

AL-603 (FAA)

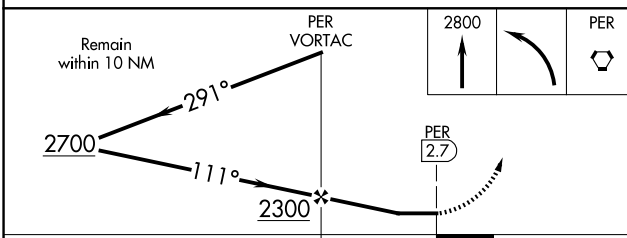
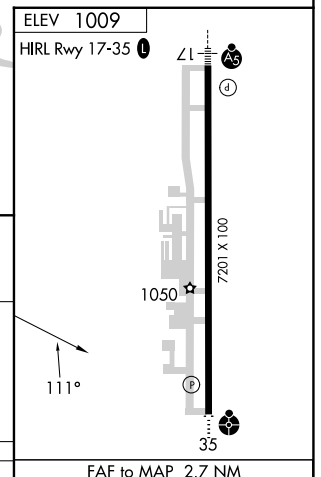
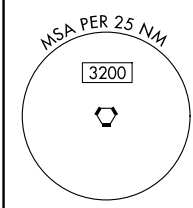
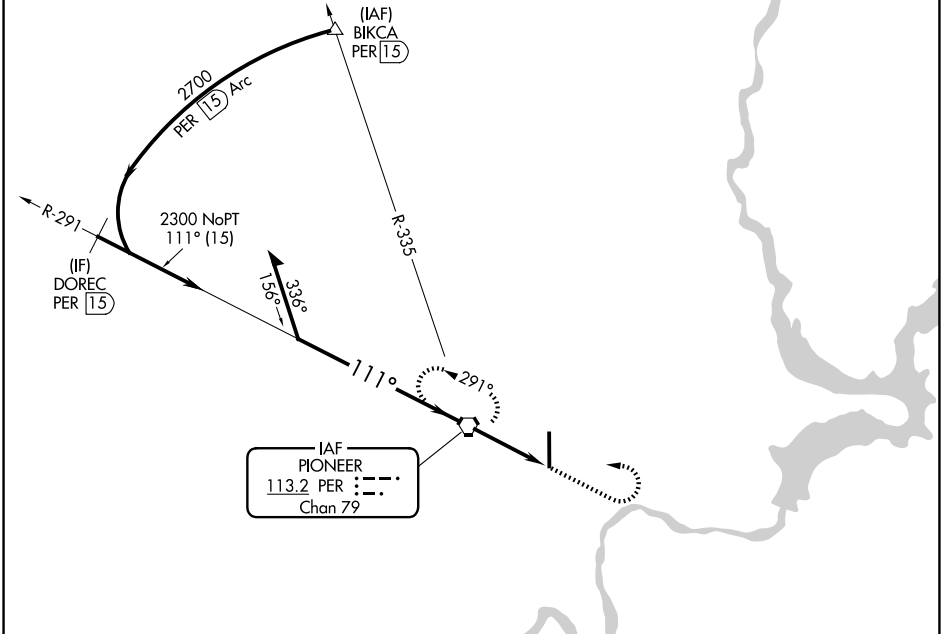
25275

VORTAC PER 113.2 Chan 79	APP CRS 111°	Rwy Ldg TDZE Apt Elev 1009	N/A N/A
--	------------------------	--	--------------------------

VOR-A
PONCA CITY RGNL (PNC)

MISSED APPROACH: Climb to 2800 then left turn direct PER VORTAC and hold.

ASOS 134.075	KANSAS CITY CENTER 127.8 319.1	UNICOM 123.0 (CTAF) 0
------------------------	--	---------------------------------



CATEGORY	FAF to MAP 2.7 NM			
	A	B	C	D
CIRCLING	1520-1 511 (600-1)	1580-1 571 (600-1)	1800-2¼ 791 (800-2¼)	1880-2¾ 871 (900-2¾)
	Knots 60	90	120	150 180
	Min:Sec 2:54	1:56	1:27	1:10 0:58

PONCA CITY, OKLAHOMA
Amdt 10D 02OCT25

36°44'N-97°06'W

PONCA CITY RGNL (PNC)
VOR-A

SC-1, 11 JUN 2026 to 09 JUL 2026

SC-1, 11 JUN 2026 to 09 JUL 2026