

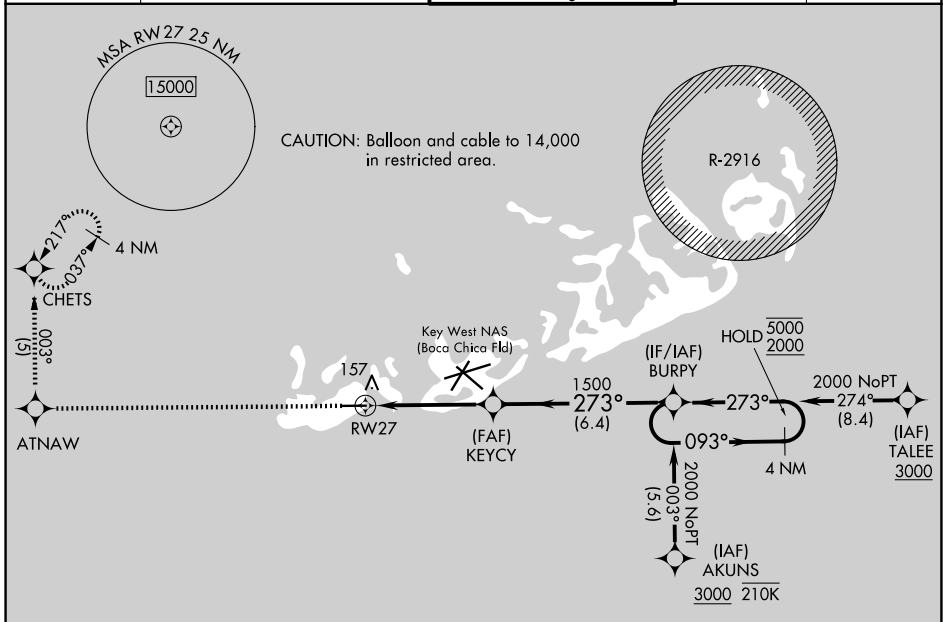
WAAS CH <b>82100</b> <b>W27A</b>	APP CRS <b>273°</b>	Rwy Ldg TDZE Apt Elev	<b>4801</b> <b>3</b> <b>3</b>
--	------------------------	-----------------------------	-------------------------------------

# RNAV (GPS) RWY 27

KEY WEST INTL (EYW)

RNP APCH - GPS.	MISSED APPROACH: Climb to 3000 direct ATNAW and on track 003° to CHETS and hold, continue to climb in hold to 3000.
<p><b>⚠</b> Rwy 27 helicopter visibility reduction below 3/4 SM NA.</p> <p><b>⚠</b> VDP NA when using NQX altimeter setting. When local altimeter setting not received, use NQX altimeter setting.</p>	

ATIS <b>119.675</b>	NAVY KEY WEST APP CON * <b>124.025 313.7</b>	KEY WEST TOWER * <b>118.2 (CTAF) 0 257.8</b>	GND CON <b>121.9</b>	UNICOM <b>122.95</b>
------------------------	---	---	-------------------------	-------------------------



ELEV 3	<b>D</b>	TDZE 3
--------	----------	--------



3000	ATNAW	CHETS	VGSI and RNAV glidepath not coincident (VGSI Angle 3.00/TCH 34).	
↑	003° tr		BURPY	
5076 X 100		KEYCY	5000	2000
TWR ☆		1500	093°	273°
RW27		1500	GP 3.00° TCH 45	
1.3 NM		3.2 NM	6.4 NM	
CATEGORY	A	B	C	D
LPV DA	253-1		250 (300-1)	
LNAV MDA	460-1	457 (500-1)	460-1 3/8	457 (500-1 3/8)
CIRCLING	500-1	497 (500-1)	620-1 3/4 617 (700-1 3/4)	620-2 617 (700-2)

KEY WEST, FLORIDA  
Amdt 1 31OCT24

24°33'N-81°46'W

# KEY WEST INTL (EYW)

## RNAV (GPS) RWY 27

SE-3, 11 JUN 2026 to 09 JUL 2026

SE-3, 11 JUN 2026 to 09 JUL 2026