

CAMRN FIVE ARRIVAL

NEW YORK APP CON
128.125 269.0
D-ATIS
128.725 (ARR/DEP)
117.7 (ARR-NE)
115.4 (ARR-SW)

RADAR required.

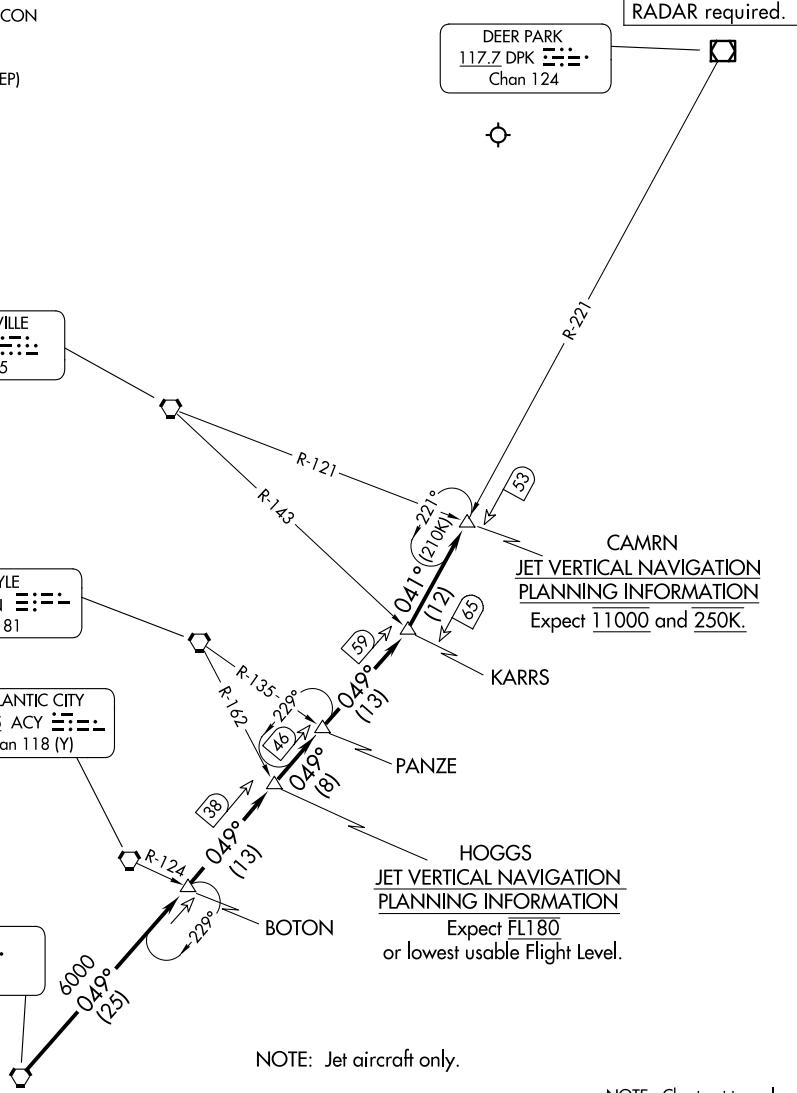
DEER PARK
117.7 DPK
Chan 124

ROBBINSVILLE
113.8 RBV
Chan 85

COYLE
113.4 CYN
Chan 81

ATLANTIC CITY
117.15 ACY
Chan 118 (Y)

SEA ISLE
114.8 SIE
Chan 95



CAMRN
JET VERTICAL NAVIGATION
PLANNING INFORMATION
Expect 11000 and 250K.

HOGGS
JET VERTICAL NAVIGATION
PLANNING INFORMATION
Expect FL180
or lowest usable Flight Level.

NOTE: Jet aircraft only.

NOTE: Chart not to scale.

ARRIVAL ROUTE DESCRIPTION

From over SIE VORTAC on SIE R-049 and DPK R-221 to CAMRN. Expect radar vectors to final approach course.

NE-2, 11 JUN 2026 to 09 JUL 2026

NE-2, 11 JUN 2026 to 09 JUL 2026