

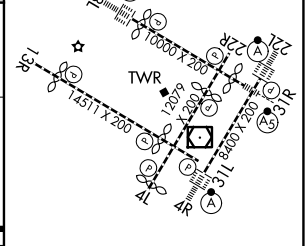
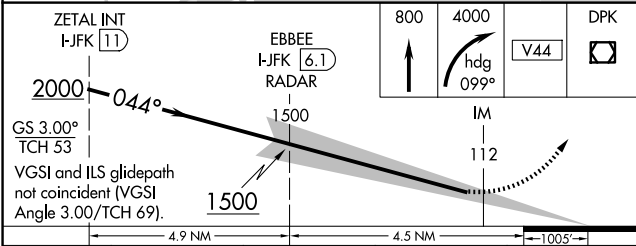
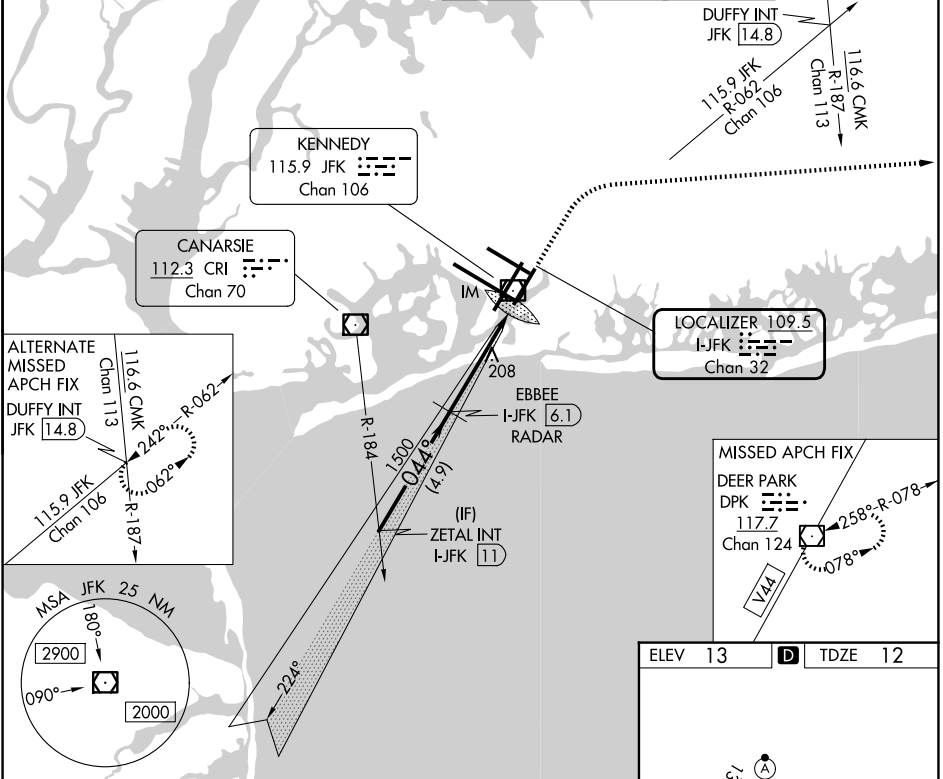
LOC/DME I-JFK	APP CRS	Rwy Ldg	8400
109.5	044°	TDZE	12
Chan 32		Apt Elev	13

ILS RWY 4R (CAT II & III)

JOHN F KENNEDY INTL (JFK)

RADAR required for procedure entry.		ALSF-2	MISSED APPROACH: Climb to 800 then climbing right turn to 4000 heading 099° and V44 to DPK VOR/DME and hold.
Simultaneous approach authorized.			

(SW)	D-ATIS (NE)	NEW YORK APP CON	KENNEDY TOWER (4R/22L and 13L/31R)	GND CON
115.4	117.7 128.275	128.125 269.0	119.1 281.55 123.9 281.55 (4L/22R and 13R/31L)	121.9 348.6



CATEGORY	A	B	C	D
S-ILS 4R	CAT II RA 112/12 100 DA 112			
S-ILS 4R	CAT III RVR 06			

CATEGORY II & III ILS - SPECIAL AIRCREW & AIRCRAFT CERTIFICATION REQUIRED

RLS Rwy's 13L and 13R
HIRL all Rwy's
TDZ/CL Rwy's 4L, 4R, 13L, 22L and 31R

NE-2, 11 JUN 2026 to 09 JUL 2026

NE-2, 11 JUN 2026 to 09 JUL 2026