

LOC/DME I-TLK <b>111.5</b> Chan <b>52</b>	APP CRS <b>134°</b>	Rwy Ldg <b>9093</b> TDZE <b>13</b> Apt Elev <b>13</b>
---	------------------------	---

# ILS or LOC RWY 13L

JOHN F KENNEDY INTL (JFK)

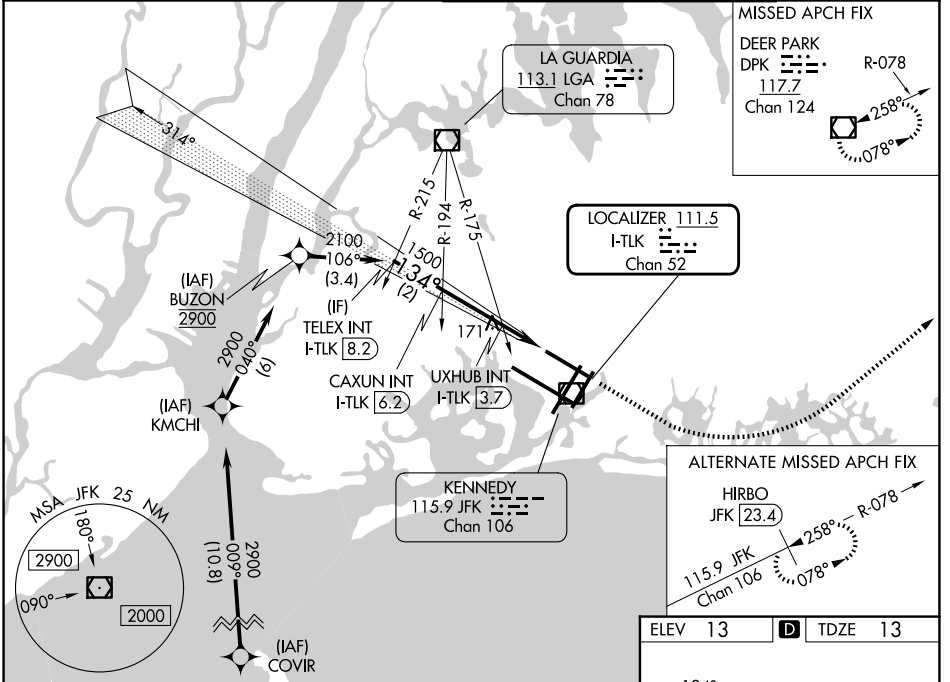
RNAV 1-GPS or RADAR required for procedure entry.  
From COVIR, KMCHI, BUZON; RNAV-1 GPS required.

For inop ALS, increase S-LOC 13L Cat C/D visibility to 1 1/2 SM.

ALSF-2

MISSED APPROACH: Climb to 600 then climbing left turn to 4000 direct DPK VOR/DME and hold.

D-ATIS (SW) <b>115.4</b>	D-ATIS (NE) <b>117.7</b> <b>128.725</b>	NEW YORK APP CON <b>128.125</b> <b>269.0</b>	KENNEDY TOWER <b>119.1</b> <b>281.55</b> (4R/22L and 13L/31R) <b>123.9</b> <b>281.55</b> (4L/22R and 13R/31L)	GND CON <b>121.9</b> <b>348.6</b>
-----------------------------	--	---	---	--------------------------------------



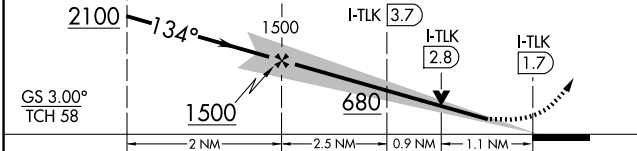
NE-2, 11 JUN 2026 to 09 JUL 2026

NE-2, 11 JUN 2026 to 09 JUL 2026

VGSI and ILS glidepath not coincident (VGSI Angle 3.00/TCH 74).

TELEX INT I-TLK [8.2]    CAXUN INT I-TLK [6.2]    UXHUB INT I-TLK [3.7]

2100 → 1500 → 680 → 1500 → 600 → 4000 → DPK



CATEGORY	A	B	C	D
S-ILS 13L	213/18		200 (200-1/2)	
S-LOC 13L	680-24	667 (700-1/2)	680-1 1/2	667 (700-1 1/2)
CIRCLING	680-1	667 (700-1)	700-2 687 (700-2)	700-2 1/4 687 (700-2 1/4)
UXHUB FIX MINIMUMS				
S-LOC 13L	440/24	427 (500-1/2)	440/40	427 (500-3/4)
CIRCLING	640-1	627 (700-1)	700-2 687 (700-2)	700-2 1/4 687 (700-2 1/4)

MISSED APCH FIX

DEER PARK DPK 117.7 Chan 124

LOCALIZER 111.5 I-TLK Chan 52

KENNEDY 115.9 JFK Chan 106

ALTERNATE MISSED APCH FIX

HIRBO JFK 23.4 Chan 106

ELEV 13    TDZE 13

RWYS 13L and 13R					
HIRL all Rwy's					
TDZ/CL Rwy's 4L, 4R, 13L, 22L and 31R					
FAF to MAP 4.5 NM					
Knots	60	90	120	150	180
Min:Sec	4:30	3:00	2:15	1:48	1:30