

LOC/DME I-HWY	APP CRS	Rwy Ldg	8400
110.9	224°	TDZE	12
Chan 46		Apt Elev	13

ILS or LOC RWY 22L

JOHN F KENNEDY INTL (JFK)

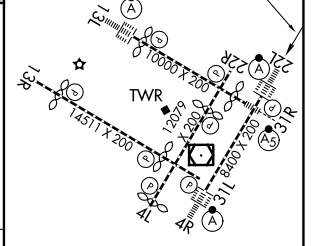
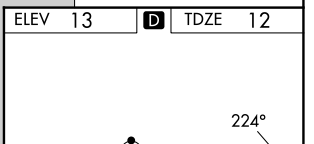
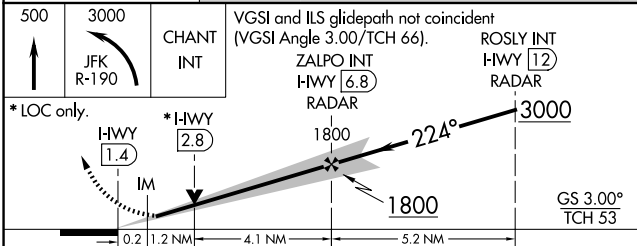
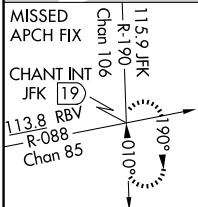
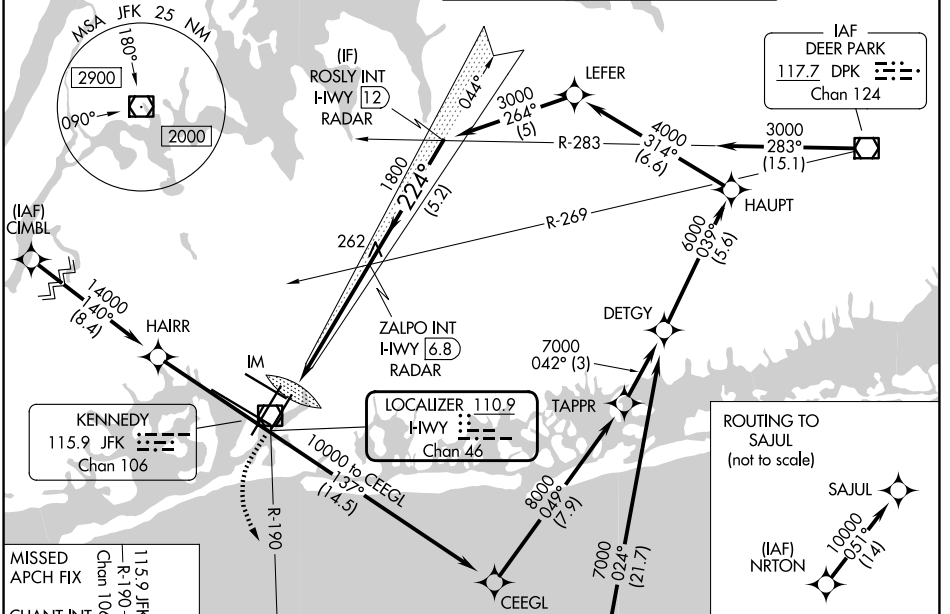
RNAV 1-GPS or RADAR required for procedure entry.
 From CIMBL, NRTON: RNAV 1-GPS required.

ALSIF-2

MISSED APPROACH: Climb to 500 then climbing left turn to 3000 on JFK VOR/DME R-190 to CHANT INT/19 DME and hold.

Simultaneous approach authorized.

D-ATIS (SW)	D-ATIS (NE)	NEW YORK APP CON	KENNEDY TOWER	GND CON
115.4	117.7	128.725	119.1 281.55 (4R/22L and 13L/31R) 123.9 281.55 (4L/22R and 13R/31L)	121.9 348.6



500	3000	CHANT INT	VGSi and ILS glidepath not coincident (VGSi Angle 3.00/TCH 66).	
	JFK R-190		ZALPO INT HWY [6.8] RADAR	ROSLY INT HWY [12] RADAR
*LOC only.	*HWY [1.4]	*HWY [2.8]	1800	3000
	IM		1800	GS 3.00° TCH 53
	0.2	1.2 NM	4.1 NM	5.2 NM

ELEV	13	TDZE	12
RLS Rwy's	13L and 13R		
HRL all Rwy's	13L, 13R, 22L, 22R, 4L, 4R, 31L, 31R		
TDZ/CL Rwy's	4L, 4R, 13L, 22L and 31R		
	FAF to MAP 5.5 NM		
Knots	60	90	120 150 180
Min:Sec	5:30	3:40	2:45 2:12 1:50

NE-2, 11 JUN 2026 to 09 JUL 2026

NE-2, 11 JUN 2026 to 09 JUL 2026