

LOC/DME I-HIQ <b>110.9</b> Chan <b>46</b>	APP CRS <b>044°</b>	Rwy Ldg <b>11010</b> TDZE <b>13</b> Apt Elev <b>13</b>
---	------------------------	--

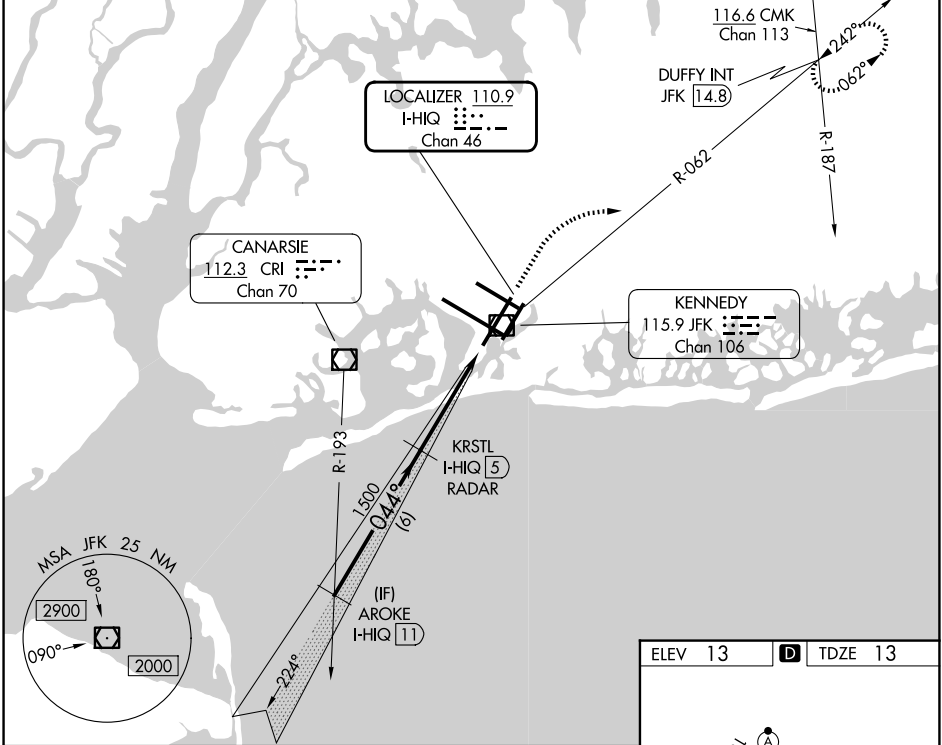
# ILS or LOC RWY 4L

JOHN F KENNEDY INTL (JFK)

RADAR required for procedure entry. DME or RADAR required for LOC only.  
 Simultaneous approach authorized.  
 Autopilot coupled approach NA below 200 feet MSL.

MISSED APPROACH: Climb to 2000 then climbing right turn to 3000 on JFK VOR/DME R-062 to DUFFY INT/JFK 14.8 DME and hold.

D-ATIS (SW) <b>115.4</b>	D-ATIS (NE) <b>117.7</b>	<b>128.725</b>	NEW YORK APP CON <b>128.125</b>	<b>269.0</b>	KENNEDY TOWER <b>119.1</b> <b>281.55</b> <b>123.9</b> <b>281.55</b> (4R/22L and 13L/31R) (4L/22R and 13R/31L)	GND CON <b>121.9</b> <b>348.6</b>
-----------------------------	-----------------------------	----------------	------------------------------------	--------------	---	--------------------------------------



NE-2, 11 JUN 2026 to 09 JUL 2026

NE-2, 11 JUN 2026 to 09 JUL 2026

