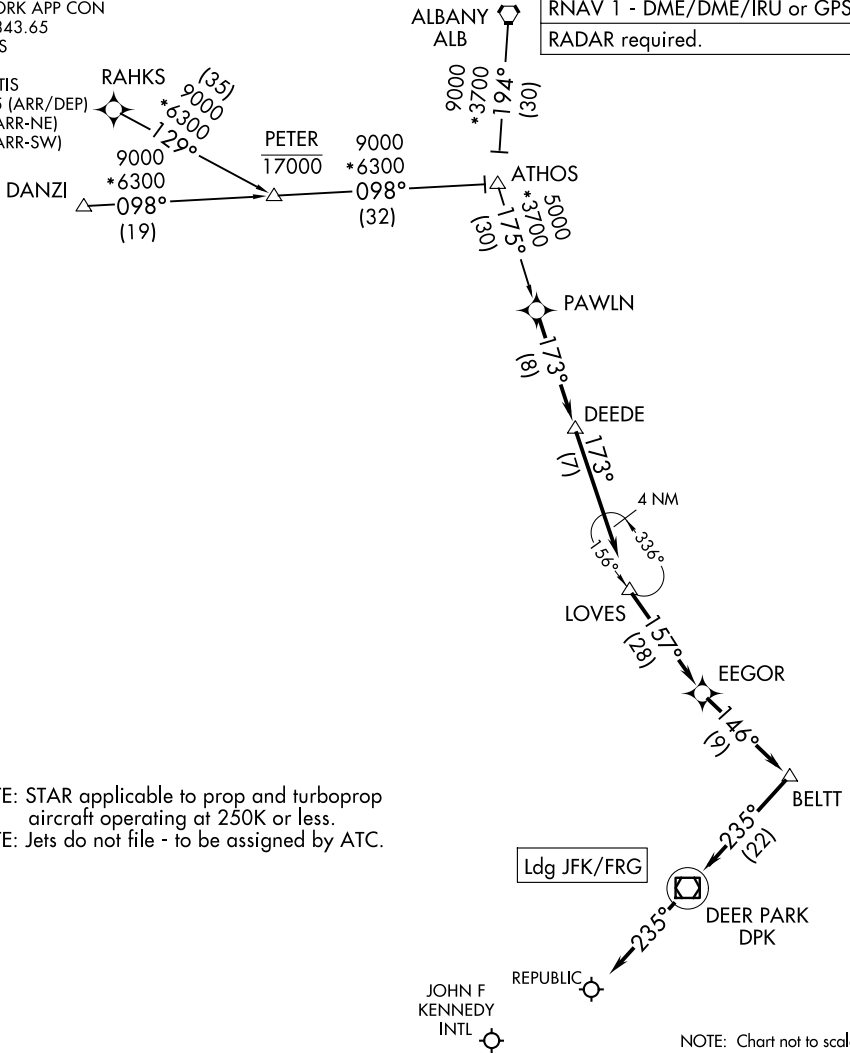


PAWLN ONE ARRIVAL (RNAV)

NEW YORK, NEW YORK

NEW YORK APP CON
 133.1 343.65
 FRG ATIS
 126.65
 JFK D-ATIS
 128.725 (ARR/DEP)
 117.7 (ARR-NE)
 115.4 (ARR-SW)

RNAV 1 - DME/DME/IRU or GPS.
 RADAR required.



NOTE: STAR applicable to prop and turboprop aircraft operating at 250K or less.
 NOTE: Jets do not file - to be assigned by ATC.

ARRIVAL ROUTE DESCRIPTION

- ALBANY TRANSITION (ALB.PAWLN1)
- ATHOS TRANSITION (ATHOS.PAWLN1)
- DANZI TRANSITION (DANZI.PAWLN1)
- RAHKS TRANSITION (RAHKS.PAWLN1)

LANDING ALL AIRPORTS: From PAWLN on track 173° to DEEDE, then on track 173° to LOVES, then on track 157° to EEGOR, then on track 146° to BELTT, then on track 235° to DPK VOR/DME, then on track 235°. Expect RADAR vectors to final approach course.

NE-2, 11 JUN 2026 to 09 JUL 2026

NE-2, 11 JUN 2026 to 09 JUL 2026