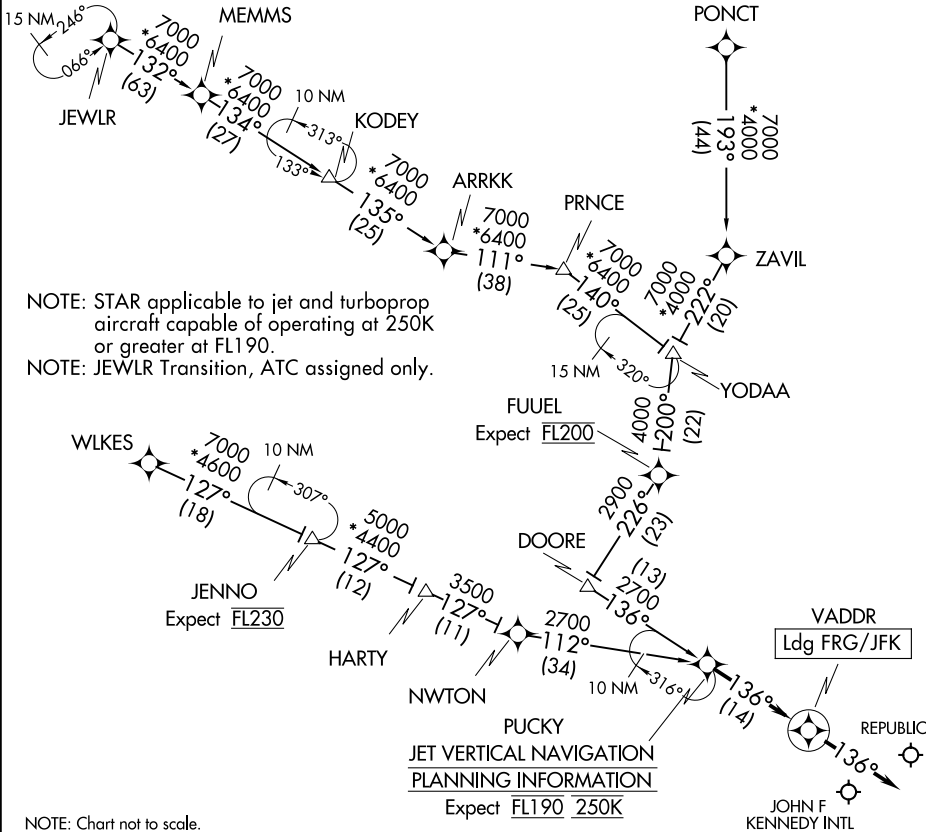


# PUCKY ONE ARRIVAL (RNAV)

NEW YORK, NEW YORK

NEW YORK APP CON  
 128.125 269.0  
 FRG ATIS  
 126.65  
 JFK D-ATIS  
 128.725 (ARR/DEP)  
 117.7 (ARR-NE)  
 115.4 (ARR-SW)

RNAV 1 - DME/DME/IRU or GPS.  
 RADAR required.



## ARRIVAL ROUTE DESCRIPTION

- ARRKK TRANSITION (ARRKK.PUCKY1)
- JEWLR TRANSITION (JEWLR.PUCKY1)
- MEMMS TRANSITION (MEMMS.PUCKY1)
- PONCT TRANSITION (PONCT.PUCKY1)
- WLKES TRANSITION (WLKES.PUCKY1)
- YODAA TRANSITION (YODAA.PUCKY1)

LANDING ALL AIRPORTS: From PUCKY on track 136° to VADDR, then on track 136°.  
 Expect RADAR vectors to final approach course.

# PUCKY ONE ARRIVAL (RNAV)

NEW YORK, NEW YORK