

WAAS CH 40019	APP CRS 224°	Rwy Ldg 7795
W22B		TDZE 13
		Apt Elev 13

RNAV (GPS) RWY 22R

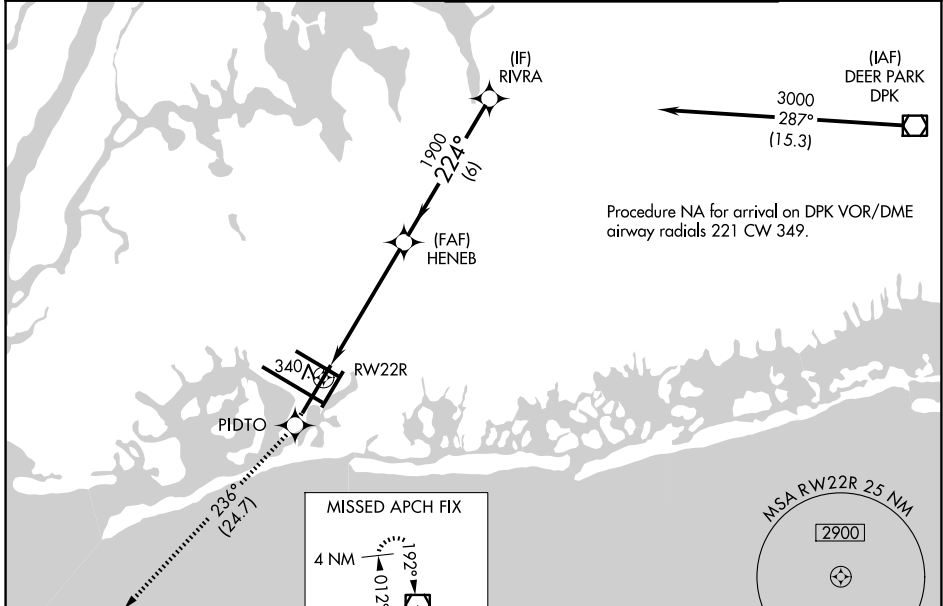
JOHN F KENNEDY INTL (JFK)

RNP APCH.

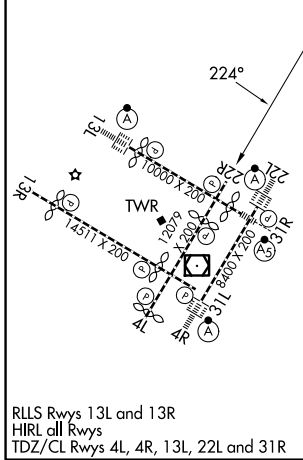
▼ Simultaneous approach authorized. Use of FD or AP providing RNAV track guidance required during simultaneous operations. LNAV procedure NA during simultaneous operations. For uncompensated Baro-VNAV systems, LNAV/VNAV NA below -12°C or above 54°C.

MISSED APPROACH:
Climb to 4000 direct
PIDTO and on track 236°
to COL VOR/DME and hold.

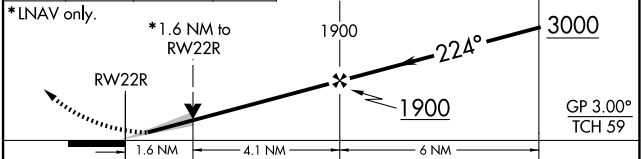
(SW) 115.4	D-ATIS (NE) 117.7	128.725	NEW YORK APP CON 128.125	269.0	KENNEDY TOWER 119.1	281.55	(4R/22L and 13L/31R)	123.9	281.55	(4L/22R and 13R/31L)	GND CON 121.9	348.6
-------------------	--------------------------	----------------	---------------------------------	--------------	----------------------------	---------------	----------------------	--------------	---------------	----------------------	----------------------	--------------



ELEV 13	D	TDZE 13
----------------	----------	----------------



4000	PIDTO	COL	VGSI and RNAV glidepath not coincident (VGSI Angle 3.00/TCH 77).
↑	✧ tr 236°	☐	



CATEGORY	A	B	C	D
LPV DA		269/40	256 (300-¾)	
LNAV/VNAV DA		501-1½	488 (500-1½)	
LNAV MDA	600/55	587 (600-1)		600-1¾ 587 (600-1¾)
CIRCLING	640-1	627 (700-1)		680-1¾ 667 (700-1¾) 680-2 667 (700-2)

NE-2, 11 JUN 2026 to 09 JUL 2026

NE-2, 11 JUN 2026 to 09 JUL 2026