

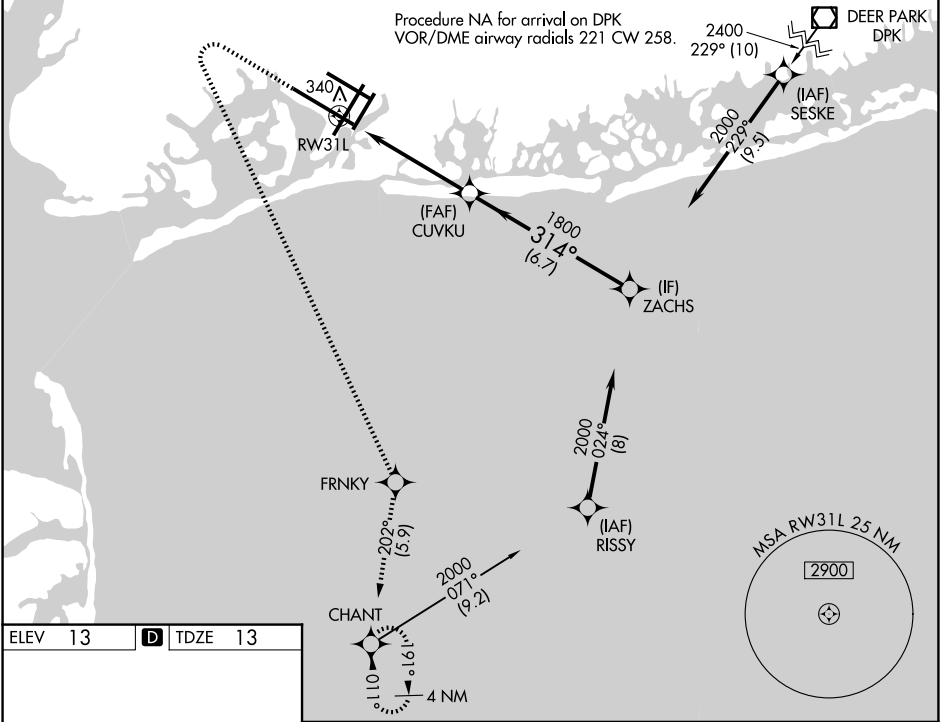
WAAS CH 50119 W31A	APP CRS 314°	Rwy Ldg 11247 TDZE 13 Apt Elev 13
--	------------------------	--

RNAV (GPS) RWY 31L

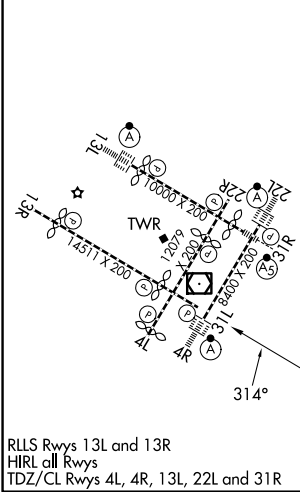
JOHN F KENNEDY INTL (JFK)

RNP APCH - GPS.	MISSED APPROACH: Climb to 500 then climbing left turn to 3000 direct FRNKY and on track 202° to CHANT and hold.
<p>Simultaneous approach authorized. For uncompensated Baro-VNAV systems, LNAV/VNAV NA below -12°C or above 54°C. Use of FD or AP required during simultaneous operations. LNAV procedure NA during simultaneous operations.</p>	

D-ATIS (SW) 115.4	D-ATIS (NE) 117.7	128.725	NEW YORK APP CON 128.125	269.0	KENNEDY TOWER 119.1 281.55 (4R/22L and 13L/31R) 123.9 281.55 (4L/22R and 13R/31L)	GND CON 121.9 348.6
-----------------------------	-----------------------------	----------------	------------------------------------	--------------	---	--------------------------------------

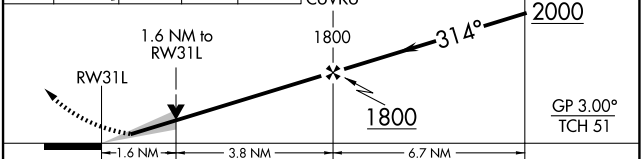


ELEV 13	D	TDZE 13
---------	----------	---------



RLS Rwws 13L and 13R
HIRL all Rwws
TDZ/CL Rwws 4L, 4R, 13L, 22L and 31R

500	3000	FRNKY	CHANT	tr 202°	VGSI and RNAV glidepath not coincident (VGSI Angle 3.00/TCH 74).
-----	------	-------	-------	---------	--



CATEGORY	A	B	C	D
LPV DA		213/40	200 (200-¾)	
LNAV/VNAV DA		541-1¾	528 (600-1¾)	
LNAV MDA	600/55	587 (600-1)	600-1¾	587 (600-1¾)
CIRCLING	640-1	627 (700-1)	700-2 687 (700-2)	700-2¼ 687 (700-2¼)

NE-2, 11 JUN 2026 to 09 JUL 2026

NE-2, 11 JUN 2026 to 09 JUL 2026