

# RNAV (GPS) X RWY 22L

JOHN F KENNEDY INTL (JFK)

APP CRS <b>234°</b>	Rwy Ldg TDZE Apt Elev	<b>8400</b> <b>12</b> <b>13</b>
------------------------	-----------------------------	---------------------------------------

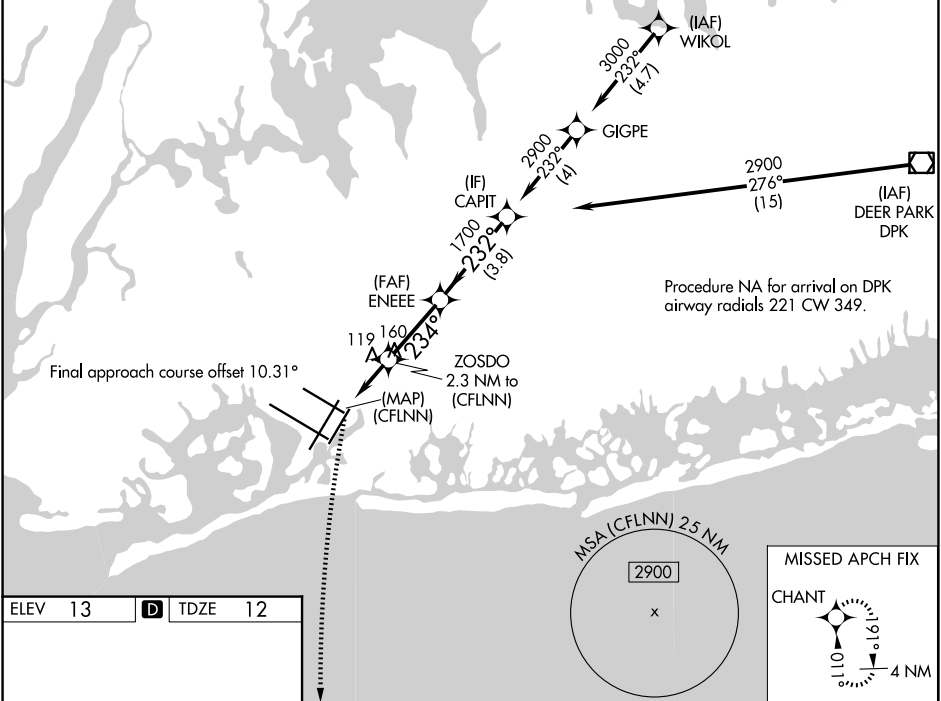
RNP APCH - GPS.

For uncompensated Baro-VNAV systems, LNAV/VNAV NA below -1.4°C or above 5.4°C.  
For inop ALS, increase LNAV/VNAV all Cats visibility to RVR 6000.

ALSF-2

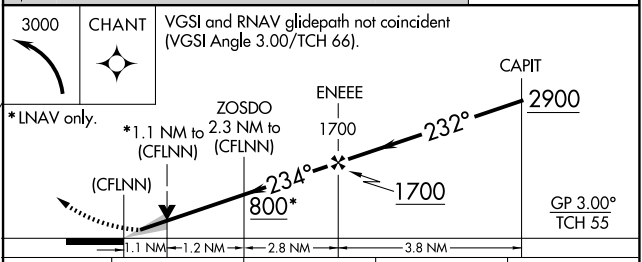
MISSED APPROACH: Climbing left turn to 3000 direct CHANT and hold.

(SW)	D-ATIS (NE)	NEW YORK APP CON	KENNEDY TOWER		GND CON
<b>115.4</b>	<b>117.7 128.725</b>	<b>128.125 269.0</b>	<b>119.1 281.55</b>	(4R/22L and 13L/31R) <b>123.9 281.55</b>	<b>121.9 348.6</b>



ELEV 13	<b>D</b>	TDZE 12
---------	----------	---------

RLS Rwws 13L and 13R  
HIRL all Rwws  
TDZ/CL Rwws 4L, 4R, 13L, 22L and 31R



CATEGORY	A	B	C	D
LNAV/VNAV DA	413/40		401 (400-¾)	
LNAV MDA	440/24	428 (500-½)	440/40	428 (500-¾)
CIRCLING	640-1	627 (700-1)	680-1¾ 667 (700-1¾)	680-2 667 (700-2)

NE-2, 11 JUN 2026 to 09 JUL 2026

NE-2, 11 JUN 2026 to 09 JUL 2026