

WAAS CH <b>77519</b> <b>W04A</b>	APP CRS <b>044°</b>	Rwy Ldg <b>11010</b> TDZE <b>13</b> Apt Elev <b>13</b>
--	------------------------	--

# RNAV (GPS) Y RWY 4L

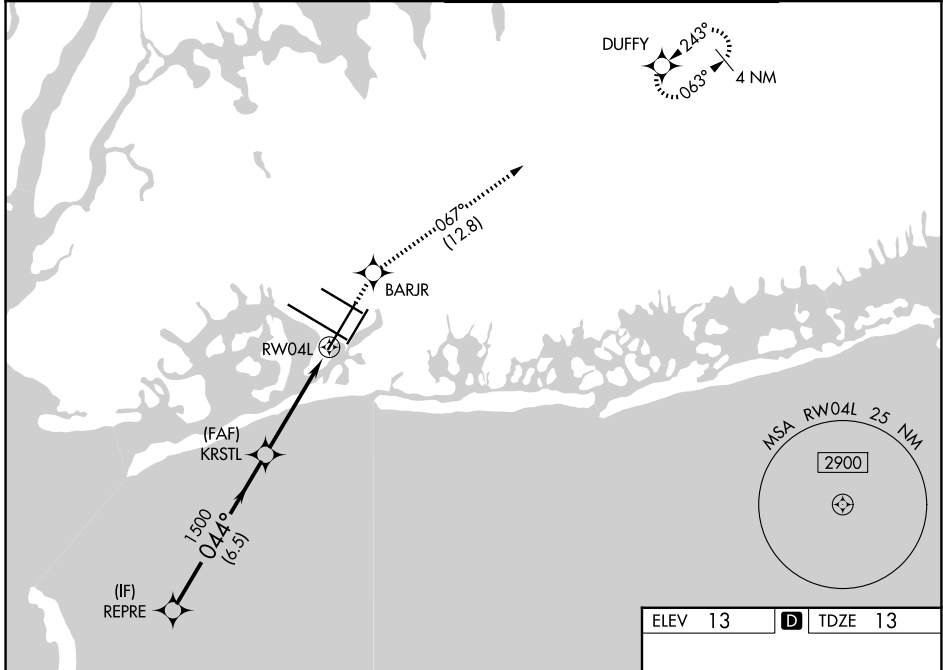
JOHN F KENNEDY INTL (JFK)

RNP APCH.

▼ Simultaneous approach authorized. Use of FD or AP providing RNAV track guidance required during simultaneous operations. LNAV procedure NA during simultaneous operations. For uncompensated Baro-VNAV systems, LNAV/VNAV NA below -12°C or above 54°C.

MISSED APPROACH: (Do not exceed 210K until BARJR) Climb to 3000 direct BARJR and track 067° to DUFFY and hold.

(SW)	D-ATIS (NE)	NEW YORK APP CON	KENNEDY TOWER (4R/22L and 13L/31R) (4L/22R and 13R/31L)	GND CON
<b>115.4</b>	<b>117.7</b> <b>128.725</b>	<b>128.125</b> <b>269.0</b>	<b>119.1</b> <b>281.55</b> <b>123.9</b> <b>281.55</b>	<b>121.9</b> <b>348.6</b>

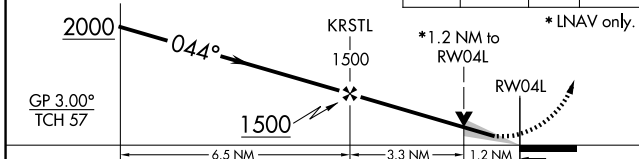


NE-2, 11 JUN 2026 to 09 JUL 2026

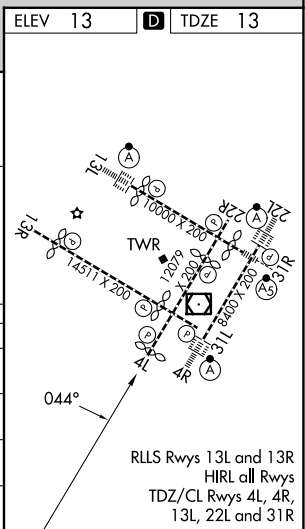
NE-2, 11 JUN 2026 to 09 JUL 2026

VGSI and RNAV glidepath not coincident (VGSI Angle 3.00/TCH 75).

3000 BARJR tr 067° DUFFY



CATEGORY	A	B	C	D
LPV DA		232/40	219 (300-¾)	
LNAV/VNAV DA		329/50	316 (400-1)	
LNAV MDA	480/55	467 (500-1)	480-1⅜	467 (500-1⅜)
CIRCLING	640-1	627 (700-1)	680-1¾ 667 (700-1¾)	680-2 667 (700-2)



RLS Rwy 13L and 13R  
HIRL all Rwy  
TDZ/CL Rwy 4L, 4R,  
13L, 22L and 31R