

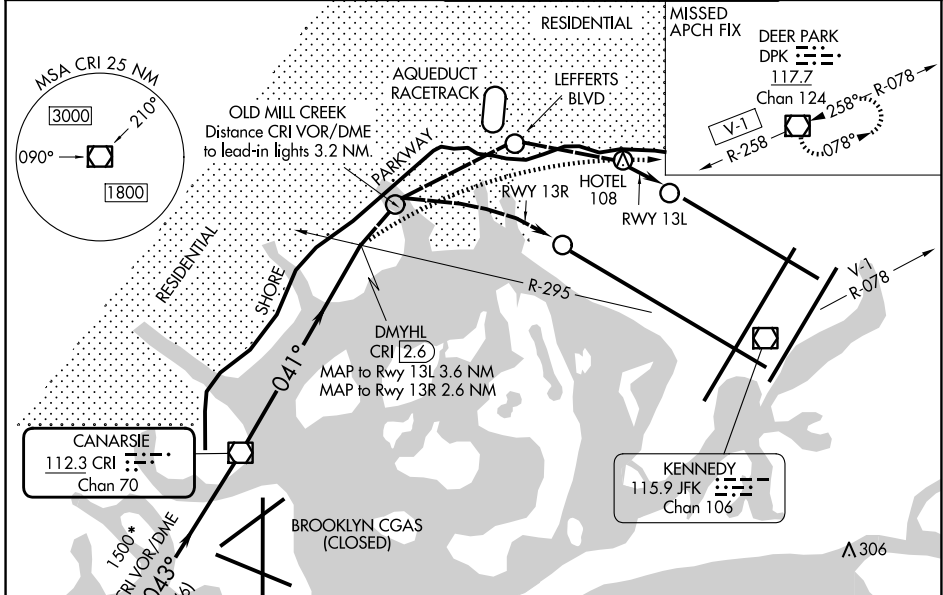
VOR/DME CRI 112.3 Chan 70	APP CRS 041°	Rwy Ldg 13R 12467 TDZE 13L 9093 Apt Elev 13
--	------------------------	--

VOR or GPS RWY 13L/R

JOHN F KENNEDY INTL (JFK)

For inop lead-in lights, procedure NA.	Rwy13L ALSF-2 	MISSED APPROACH: At or beyond MAP, climbing right turn to 4000 on heading 100° and V-1 to DPK VOR/DME and hold.

(SW)	D-ATIS (NE)	NEW YORK APP CON	KENNEDY TOWER	GND CON
115.4	117.7 128.725	128.125 269.0	119.1 281.55 (4R/22L and 13L/31R) 123.9 281.55 (4L/22R and 13R/31L)	121.9 348.6



DME or RADAR REQUIRED

ELEV 13 TDZE 13

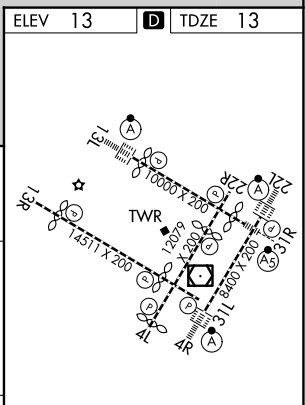
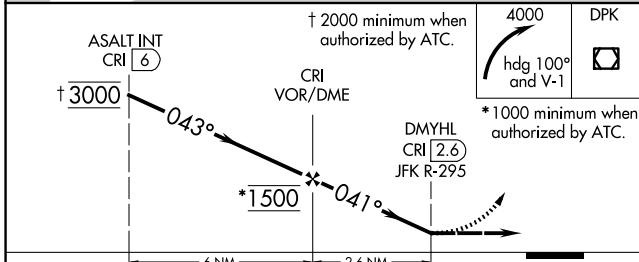
○ Lead-in light groups

When visual reference established, fly visual to airport via lead-in lights to Rwy 13L or 13R. Close adherence to flight track required for noise abatement.

† 2000 minimum when authorized by ATC.

4000 hdg 100° and V-1

* 1000 minimum when authorized by ATC.



CATEGORY	A	B	C	D
RLLS-13L	800-2 787 (800-2)	800-2½ 787 (800-2¼)	800-2½ 787 (800-2¼)	800-2½ 787 (800-2¼)
RLLS-13R	800-2 787 (800-2)	800-2½ 787 (800-2¼)	800-2½ 787 (800-2¼)	800-2½ 787 (800-2¼)

RLS Rws 13L and 13R				
HIRL all Rws				
TDZ/CL Rws 4L, 4R, 13L, 22L and 31R				
FAF to MAP 2.6 NM				
Knots	60	90	120	150 180
Min:Sec	2:36	1:44	1:18	1:02 0:52

NE-2, 11 JUN 2026 to 09 JUL 2026

NE-2, 11 JUN 2026 to 09 JUL 2026