

(ENDED2.ENDED) 25219

AL-625 (FAA)

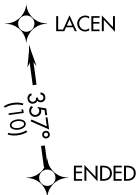
ST PETE-CLEARWATER INTL (PIE)  
ST PETERSBURG-CLEARWATER, FLORIDA

# ENDED TWO DEPARTURE (RNAV)

TAMPA DEP CON  
125.3 316.05  
ATIS  
134.5  
CLNC DEL  
120.6 350.2  
GND CON  
121.9 348.6  
ST. PETERSBURG-CLEARWATER TOWER \*  
118.3 (CTAF) 257.8

RNAV 1 - DME/DME/IRU or GPS required.  
RADAR required.

**TOP ALTITUDE:  
1600**

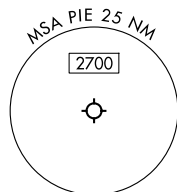
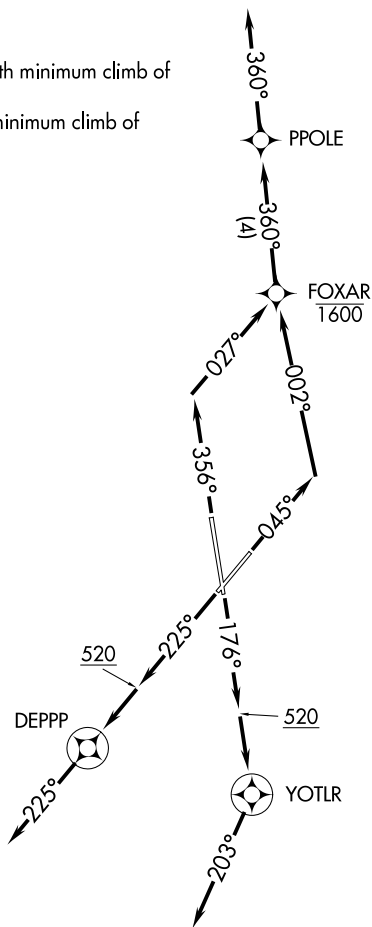


### TAKEOFF MINIMUMS

Rwy 18: Standard.

Rwys 4, 36: Standard with minimum climb of 500'/NM to 520.

Rwy 22: Standard with minimum climb of 230'/NM to 300.



NOTE: Jet aircraft only.

NOTE: Chart not to scale.

(CONTINUED ON FOLLOWING PAGE)

# ENDED TWO DEPARTURE (RNAV)

(ENDED2.ENDED) 16MAY24

ST PETERSBURG-CLEARWATER, FLORIDA  
ST PETE-CLEARWATER INTL (PIE)

SE-3, 11 JUN 2026 to 09 JUL 2026

SE-3, 11 JUN 2026 to 09 JUL 2026