

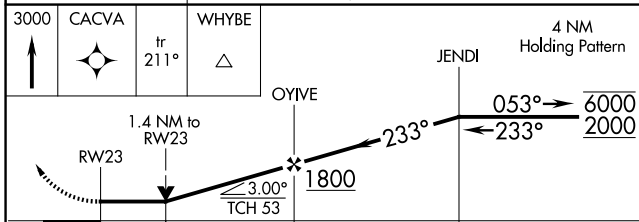
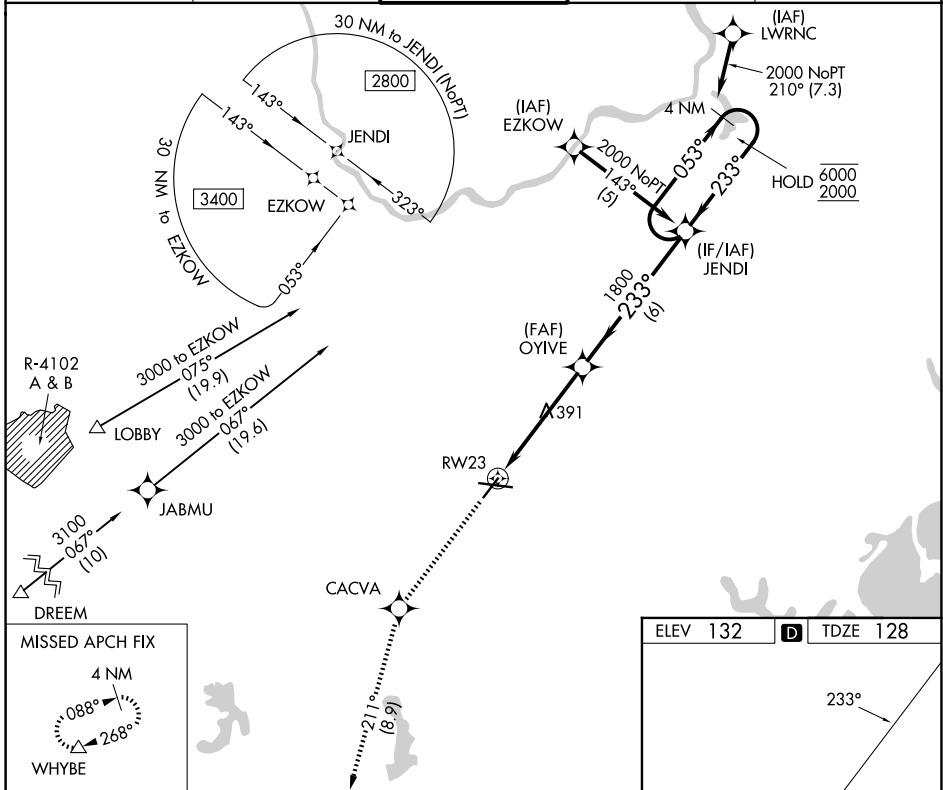
APP CRS <b>233°</b>	Rwy Ldg <b>5107</b>
	TDZE <b>128</b>
	Apt Elev <b>132</b>

# RNAV (GPS) RWY 23

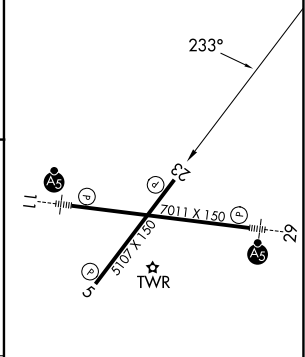
LAURENCE G HANSCOM FLD (BED)

RNP APCH - GPS.		MISSED APPROACH: Climb to 3000 direct CACVA and on track 211° to WHYBE and hold.		
Rwy 23 helicopter visibility reduction below 3/4 SM NA.				

ATIS <b>124.6</b>	BOSTON APP CON <b>124.4 279.6</b>	HANSCOM TOWER★ <b>118.5 (CTAF) 257.2</b>	GND CON <b>121.7</b>	UNICOM <b>122.95</b>
----------------------	--------------------------------------	---	-------------------------	-------------------------



ELEV 132		TDZE 128
----------	--	----------



CATEGORY	A	B	C	D
LNVA MDA	660-1	532 (600-1)	660-1½	532 (600-1½)
CIRCLING	720-1	588 (600-1)	880-2¼ 748 (800-2¼)	920-2½ 788 (800-2½)

MIRL Rwy 5-23   
 HIRL Rwy 11-29   
 REIL Rws 5 and 23

NE-1, 11 JUN 2026 to 09 JUL 2026

NE-1, 11 JUN 2026 to 09 JUL 2026