

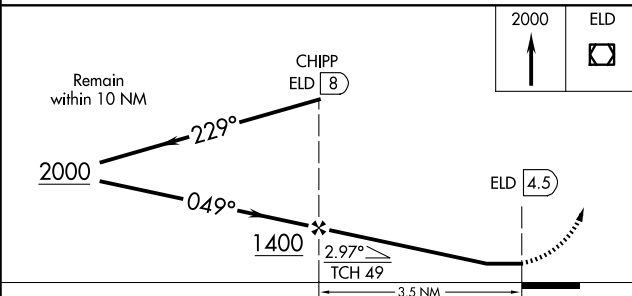
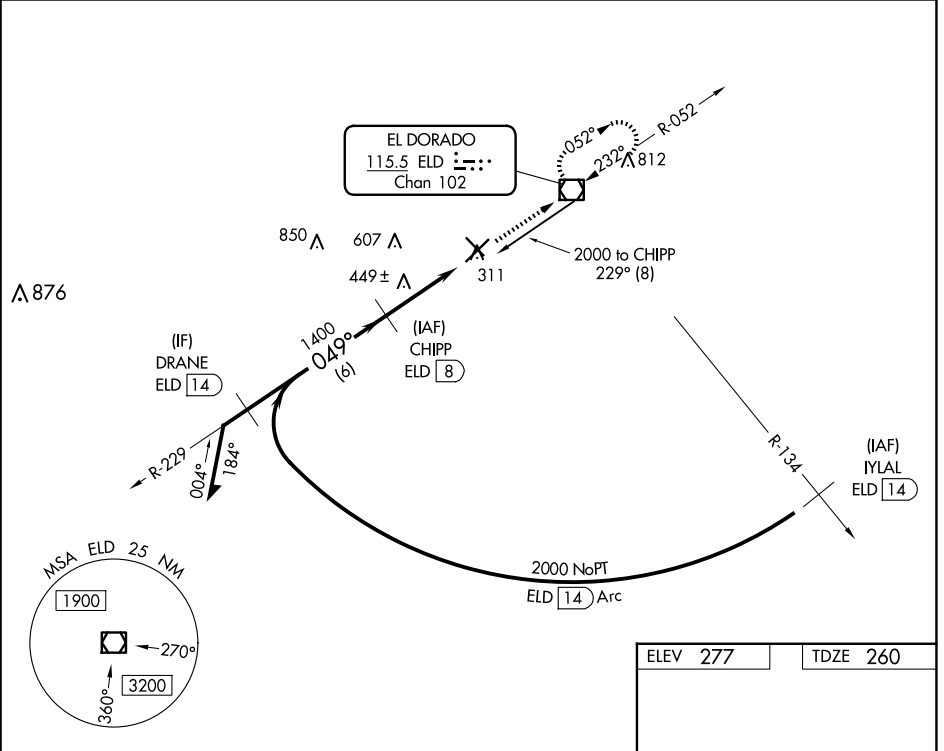
VOR/DME ELD <b>115.5</b> Chan <b>102</b>	APP CRS <b>049°</b>	Rwy Idg <b>6601</b> TDZE <b>260</b> Apt Elev <b>277</b>
--	------------------------	---

# VOR/DME RWY 4

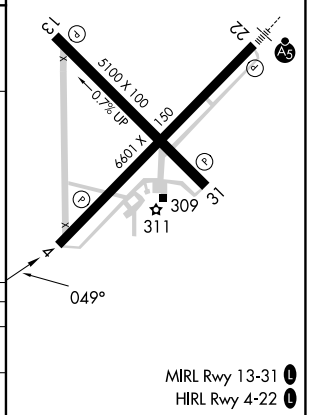
SOUTH ARKANSAS RGNL AT GOODWIN FLD (ELD)

▼ Straight-in Rwy 4 NA at night, Circling Rwy 4, 13, 31 NA at night. Rwy 4 helicopter visibility reduction below 1 SM NA.
 MISSED APPROACH: Climb to 2000 direct ELD VOR/DME and hold.

ASOS <b>118.325</b>	FORT WORTH CENTER <b>128.2 269.1</b>	UNICOM <b>123.0 (CTAF)</b> <span>📻</span>
------------------------	---	--



ELEV 277	TDZE 260
----------	----------



CATEGORY	A	B	C	D
S-4	700-1	440 (500-1)	700-1¼ 440 (500-1¼)	700-1½ 440 (500-1½)
CIRCLING	740-1	463 (500-1)	920-1¾ 643 (700-1¾)	920-2 643 (700-2)

MIRL Rwy 13-31 📻  
 HIRL Rwy 4-22 📻

SC-1, 11 JUN 2026 to 09 JUL 2026

SC-1, 11 JUN 2026 to 09 JUL 2026