

WAAS CH 53732 W35A	APP CRS 349°	Rwy Ldg TDZE Apt Elev	4808 39 40
--	------------------------	-----------------------------	---------------------------------------

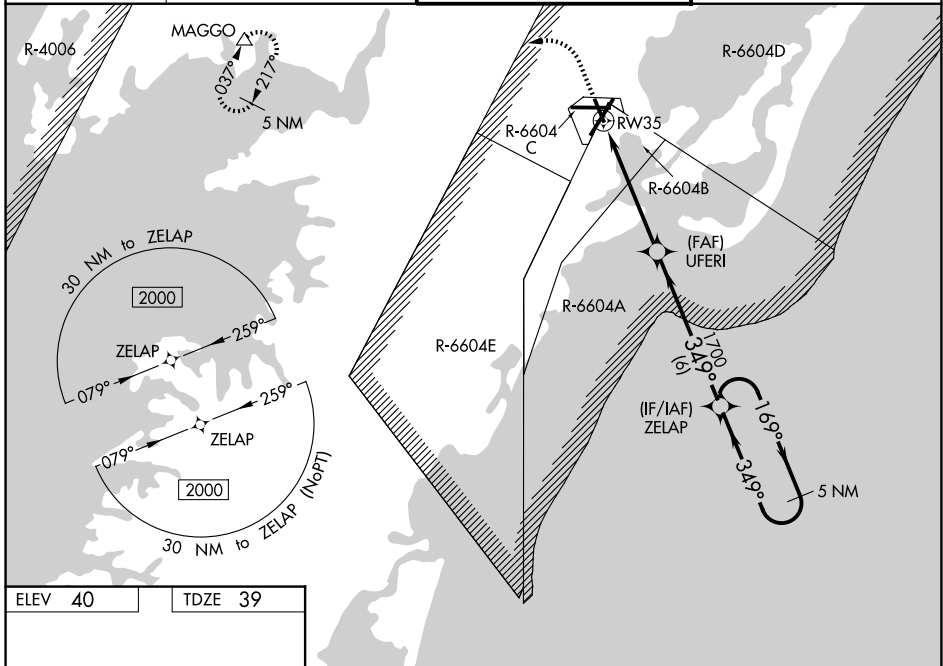
RNAV (GPS) RWY 35

WALLOPS FLIGHT FACILITY (WAL)

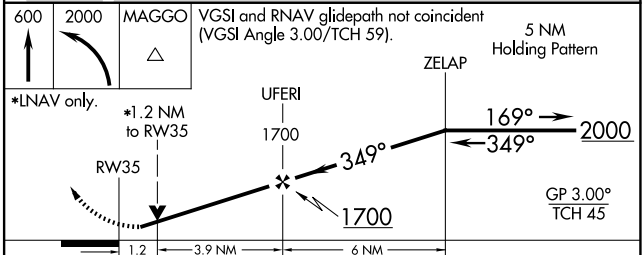
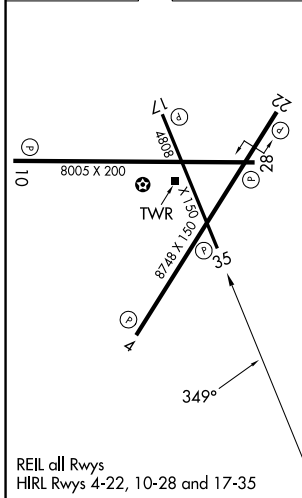
⚠ For uncompensated Baro-VNAV systems, LNAV/VNAV NA below -11°C (13°F) or above 54°C (130°F). DME/DME RNP-0.3 NA. When local altimeter setting not received, use Salisbury altimeter setting: increase LPV DA to 343; increase LNAV/VNAV DA to 464 and all Cats visibility ¼ mile; increase all MDA 60 feet and LNAV Cats C/D visibility ½ mile and Circling Cat C visibility ¼ mile. Baro-VNAV and VDP NA when using Salisbury altimeter setting. Helicopter visibility reduction below ¾ SM NA. Procedure NA when R-6604 active.

MISSED APPROACH: Climb to 600 then climbing left turn to 2000 direct MAGGO and hold.

ASOS 119.175	PATUXENT APP CON★ 127.95 314.0	WALLOPS TOWER★ 126.5 (CTAF) 306.975 (CTAF)	GND CON 127.875 269.325
------------------------	--	--	-----------------------------------



ELEV 40	TDZE 39
---------	---------



CATEGORY	A	B	C	D
LPV DA		289-1	250 (300-1)	
LNAV/VNAV DA		410-1¼	371 (400-1¼)	
LNAV MDA	460-1	421 (500-1)	460-1¼	421 (500-1¼)
CIRCLING	600-1	560 (600-1)	620-1½ 580 (600-1½)	860-2¾ 820 (900-2¾)

NE-3, 11 JUN 2026 to 09 JUL 2026

NE-3, 11 JUN 2026 to 09 JUL 2026