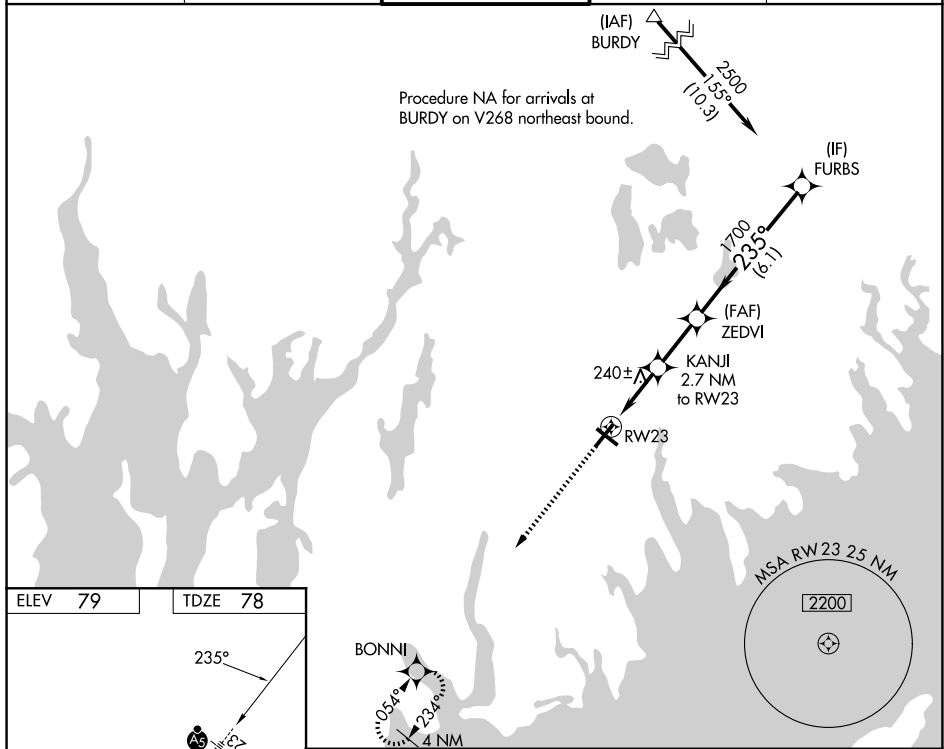


| | | | |
|--|------------------------|---|-------------|
| WAAS CH 65638 W23A | APP CRS 235° | Rwy Ldg TDZE 78 Apt Elev 79 | 5000 |
|--|------------------------|---|-------------|

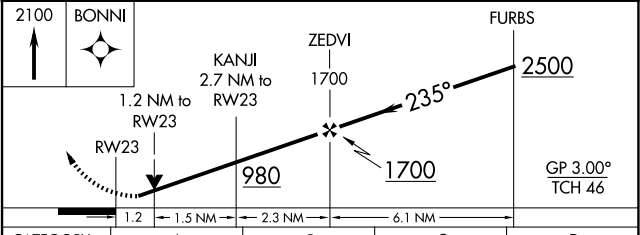
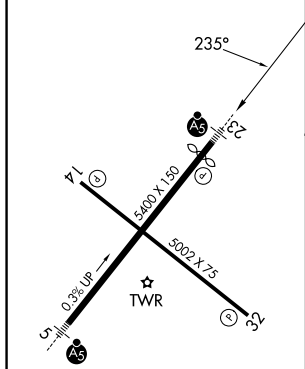
RNAV (GPS) RWY 23

NEW BEDFORD RGNL (E/WB)

| | | | | |
|-----------------------|---|--|-----------|--|
| RNP APCH - GPS. | | For uncompensated Baro-VNAV systems, LNAV/VNAV NA below -15°C or above 54°C. Rwy 23 helicopter visibility reduction below 3/4 SM NA. Circling Rwy 14 NA at night. For inop ALS, increase LPV all Cats visibility 7/8 mile, increase LNAV/VNAV all Cats and LNAV Cat A/B visibility 1 SM. | MALSR | MISSED APPROACH: Climb to 2100 direct BONNI and hold. |
| ATIS 126.85 | PROVIDENCE APP CON* 128.7 269.525 | | | |



| | |
|---------|---------|
| ELEV 79 | TDZE 78 |
|---------|---------|



| CATEGORY | A | B | C | D |
|--------------|-------------|-------------|-----------------|-------------|
| LPV DA | | 359-3/4 | 281 (300-3/4) | |
| LNAV/VNAV DA | | 453-3/4 | 375 (400-3/4) | |
| LNAV MDA | | 500-3/4 | 422 (500-3/4) | |
| CIRCLING | 620-1 | 640-1 | 720-1 3/4 | 960-3 |
| | 541 (600-1) | 561 (600-1) | 641 (700-1 3/4) | 881 (900-3) |

- MIRL Rwy 14-32
- HIRL Rwy 5-23
- REIL Rwy 32

NE-1, 11 JUN 2026 to 09 JUL 2026

NE-1, 11 JUN 2026 to 09 JUL 2026