

WAAS CH <b>60938</b> <b>W05A</b>	APP CRS <b>054°</b>	Rwy Ldg TDZE Apt Elev	<b>5400</b> <b>70</b> <b>79</b>
--	------------------------	-----------------------------	---------------------------------------

# RNAV (GPS) RWY 5

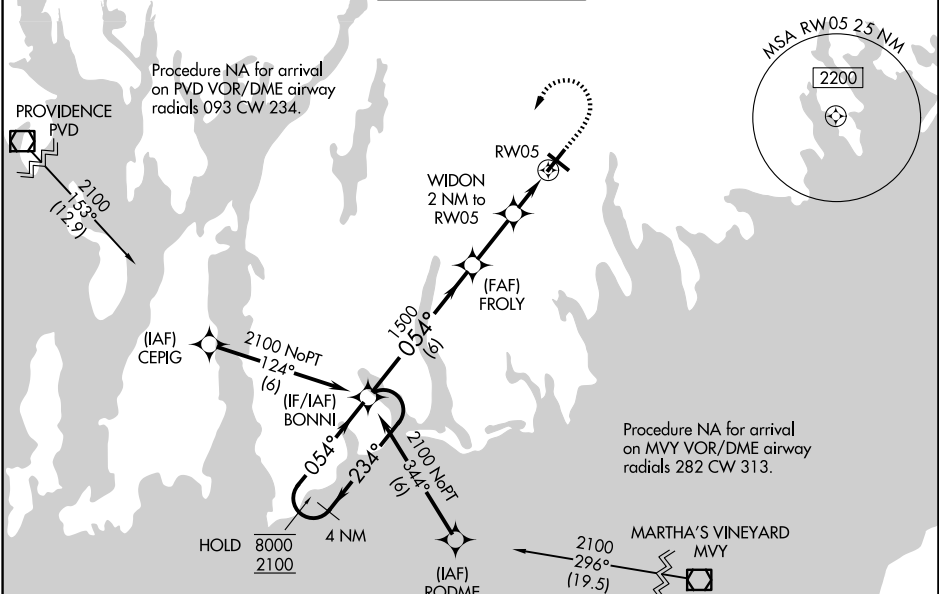
NEW BEDFORD RGNL (E/WB)

RNP APCH - GPS.

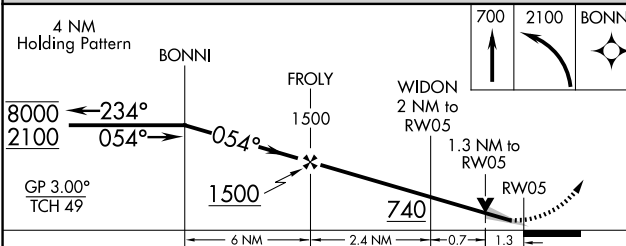
**⚠** For uncompensated Baro-VNAV systems, LNAV/VNAV NA below -13°C or above 54°C. Circling Rwy 14 NA at night. For inop ALS, increase LNAV/ VNAV all Cats and LNAV Cat C/D visibility to 1½ SM.

**MALSR**  
**AS**  
MISSED APPROACH: (Do not exceed 235K until BONNI) climb to 700 then climbing left turn to 2100 direct BONNI and hold.

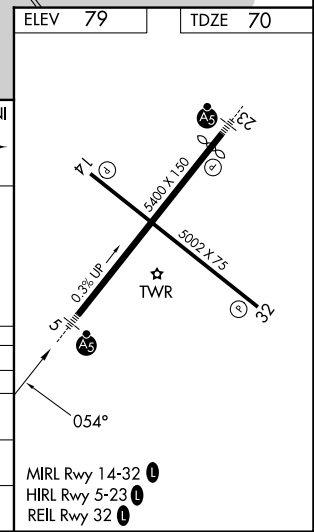
ATIS <b>126.85</b>	PROVIDENCE APP CON* <b>128.7 269.525</b>	NEW BEDFORD TOWER* <b>118.1 (CTAF) 239.0</b>	GND CON <b>121.9</b>	UNICOM <b>122.95</b>
-----------------------	---	---	-------------------------	-------------------------



ELEV	79	TDZE	70
------	----	------	----



CATEGORY	A	B	C	D
LPV DA		285/24	215 (300-½)	
LNAV/VNAV DA		540/50	470 (500-1)	
LNAV MDA	540/24	470 (500-½)	540/50	470 (500-1)
CIRCLING	620-1 541 (600-1)	640-1 561 (600-1)	720-1¾ 641 (700-1¾)	960-3 881 (900-3)



NE-1, 11 JUN 2026 to 09 JUL 2026

NE-1, 11 JUN 2026 to 09 JUL 2026