

APP CRS	Rwy Ldg	<b>5500</b>
<b>356°</b>	TDZE	<b>208</b>
	Apt Elev	<b>208</b>

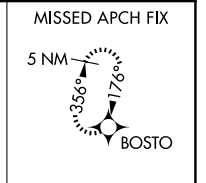
# RNAV (GPS) RWY 35

OLYMPIA RGNL (OLM)

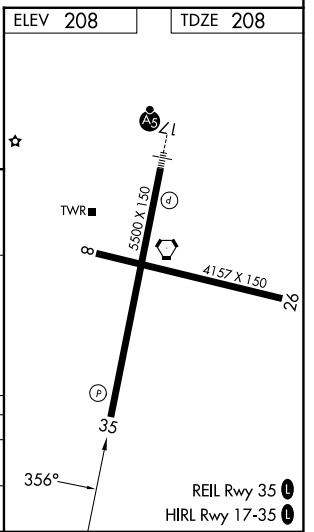
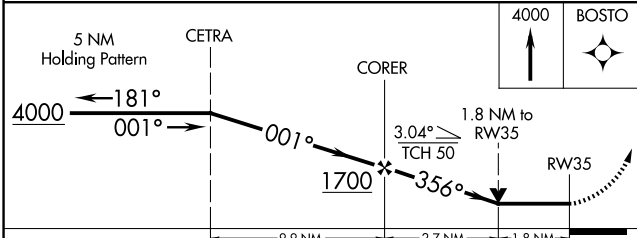
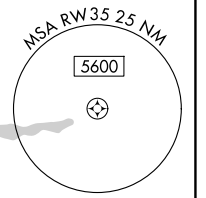
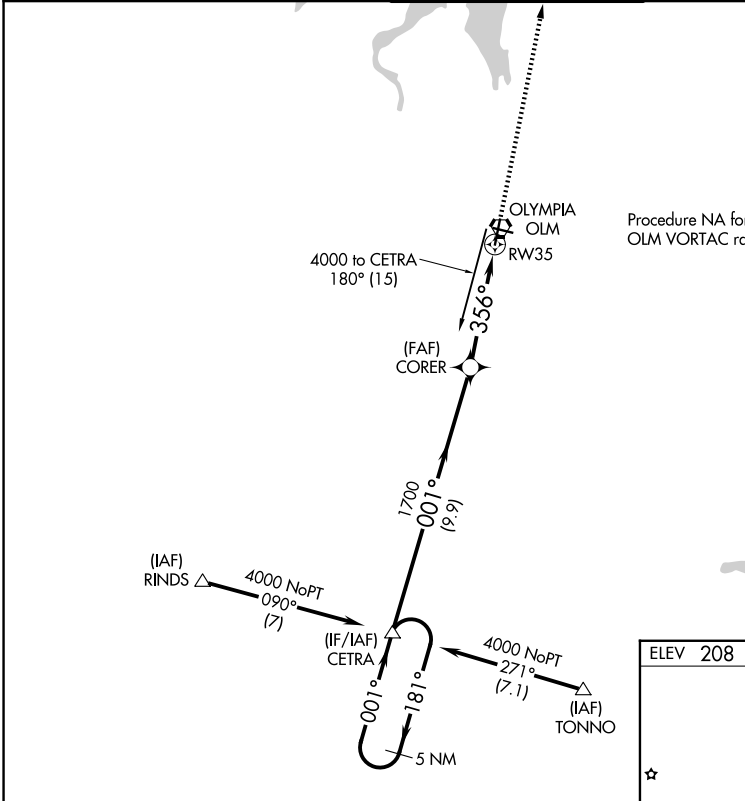
**⚠** Rwy 35 helicopter visibility reduction below 3/4 SM NA.  
DME/DME RNP-0.3 NA.

MISSED APPROACH: Climb to 4000 direct BOSTO and hold, continue climb-in-hold to 4000.

ATIS <b>135.725</b>	SEATTLE APP CON <b>121.1 290.9</b>	OLYMPIA TOWER* <b>124.4 (CTAF) 254.25</b>	GND CON <b>121.6</b>	UNICOM <b>122.95</b>
------------------------	---------------------------------------	--	-------------------------	-------------------------



Procedure NA for arrival on OLM VORTAC radials 095 CW 250.



CATEGORY	A	B	C	D
LNVA MDA	840-1	632 (700-1)	840-1 3/4	632 (700-1 3/4)
CIRCLING	840-1 632 (700-1)	860-1 652 (700-1)	1020-2 1/2 812 (900-2 1/2)	1020-2 3/4 812 (900-2 3/4)

NW-1, 11 JUN 2026 to 09 JUL 2026

NW-1, 11 JUN 2026 to 09 JUL 2026