

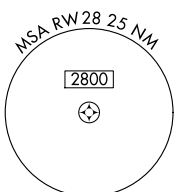
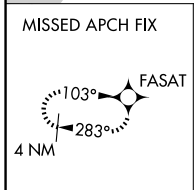
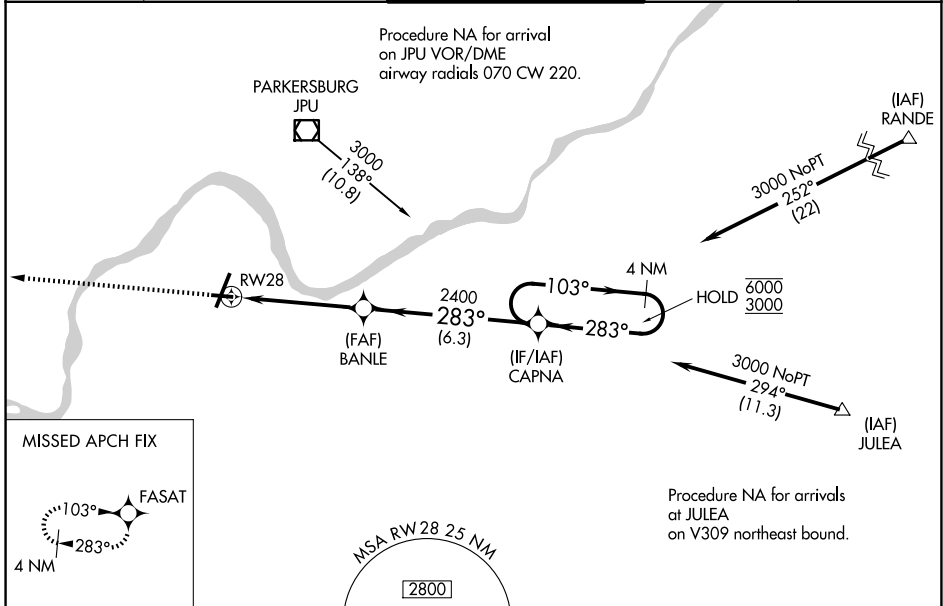
WAAS CH 61227 W28A	APP CRS 283°	Rwy Ldg TDZE 4002 839	Apt Elev 859
--	------------------------	---	------------------------

RNAV (GPS) RWY 28

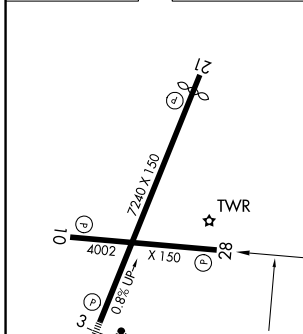
MID-OHIO VALLEY RGNL (PKB)

RNP APCH.		MISSED APPROACH: Climb to 3000 direct FASAT and hold.	
<p>▽ Rwy 28 helicopter visibility reduction below 1 SM NA. When local altimeter setting not received, use Athens/Albany altimeter setting and increase all MDA 100 feet, increase LP/LNAV Cats C/D visibility ¼ SM and Circling Cat C/D ½ SM. Straight-in Rwy 28 NA at night, Circling Rwy 10, 28 NA at night.</p>			

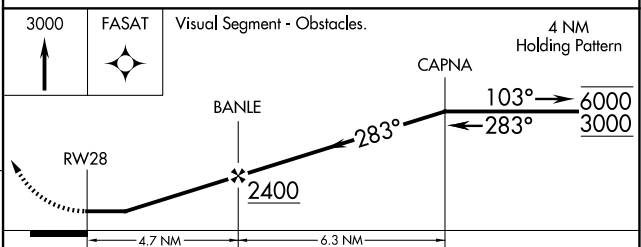
ATIS 124.35	INDIANAPOLIS CENTER 125.55 317.475	PARKERSBURG TOWER * 123.7 (CTAF) 0 257.8	GND CON 126.45	UNICOM 122.95
-----------------------	--	--	--------------------------	-------------------------



ELEV 859	D	TDZE 839
----------	----------	----------



REIL Rwy 28	HIRL Rws 3-21 and 10-28	REIL Rwy 10, 21
-------------	-------------------------	-----------------



CATEGORY	A	B	C	D
LP MDA	1300-1	461 (500-1)	1300-1½	461 (500-1½)
LNAV MDA	1320-1	481 (500-1)	1320-1½	481 (500-1½)
CIRCLING	1320-1 461 (500-1)	1380-1 521 (600-1)	1640-2¼ 781 (800-2¼)	1640-2½ 781 (800-2½)

NE-4, 11 JUN 2026 to 09 JUL 2026