

WAAS CH 77813 W32A	APP CRS 321°	Rwy Ldg 6513 TDZE 712 Apt Elev 721
--	------------------------	---

RNAV (GPS) RWY 32

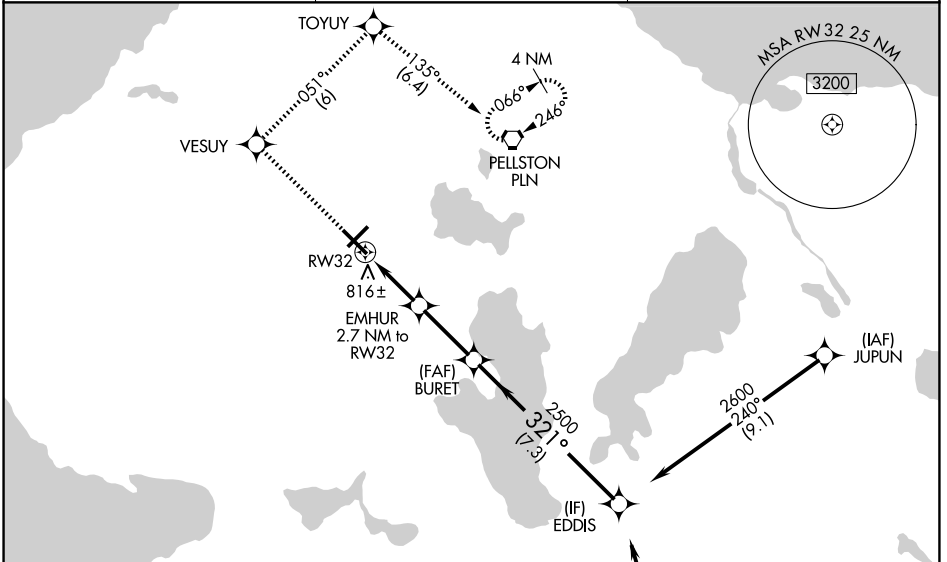
PELLSTON RGNL/EMMET COUNTY (PLN)

RNP APCH - GPS.

⚠ Circling Rwy 5, 14 NA at night. Baro-VNAV and VDP NA when using MGN altimeter setting. For uncompensated Baro-VNAV systems, LNAV/VNAV NA below -20°C or above 54°C. For inop ALS, increase LNAV/VNAV all Cats and LNAV Cat C/D visibility to 1 SM. For inop ALS when using MGN altimeter setting; increase LNAV/VNAV all Cats visibility to 1 SM and LNAV Cat C/D visibility to 1½ SM. When local altimeter setting not received, use MGN altimeter setting and increase LPV DA to 942 feet; increase LNAV/VNAV DA to 1086 feet; increase all MDAs 40 feet and LNAV visibility Cat C/D ½ SM.

MALSR
AS
Climb to 2600 direct VESUY and on track 051° to TOYUY and on track 135° to PLN VORTAC and hold. (Do not exceed 200K until TOYUY).

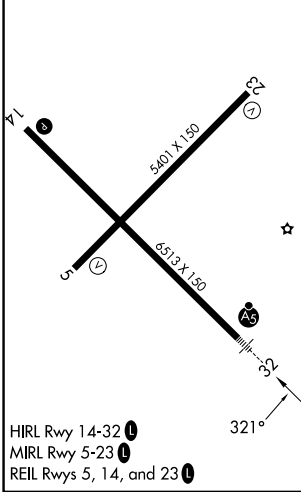
ASOS 119.025	MINNEAPOLIS CENTER 134.6 354.05	UNICOM 123.0 (CTAF) 0
------------------------	---	---------------------------------



ELEV 721	D	TDZE 712
----------	----------	----------

Procedure NA for arrivals at RONDO on V609 southbound.

2600	VESUY	tr 051°	TOYUY	tr 135°	PLN	EDDIS
					BURET	
			EMHUR 2.7 NM to RW32		2500	2600
			1 NM to RW32		1620	2500
			1 NM	1.7 NM	2.8 NM	7.3 NM
CATEGORY	A		B		D	
LPV DA	912-½		200 (200-½)			
LNAV/VNAV DA	1056-⅝		344 (400-⅝)			
LNAV MDA	1080-½	368 (400-½)	1080-⅝	368 (400-⅝)		
CIRCLING	1280-1 559 (600-1)	1320-1 599 (600-1)	1560-2½ 839 (900-2½)	1660-3 939 (1000-3)		



EC-1, 11 JUN 2026 to 09 JUL 2026

EC-1, 11 JUN 2026 to 09 JUL 2026