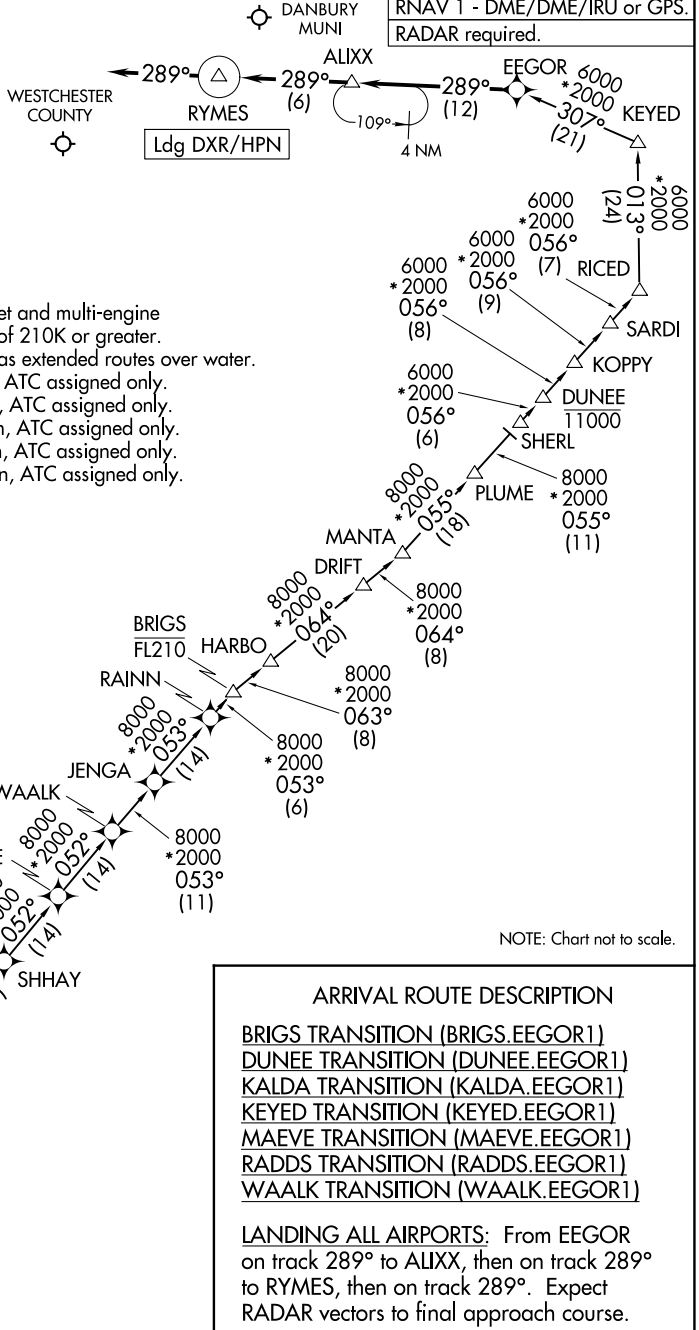


EEGOR ONE ARRIVAL (RNAV)

WHITE PLAINS, NEW YORK

NEW YORK APP CON
 120.8 126.4 257.65
 DXR ATIS
 127.75
 HPN D-ATIS
 133.8

RNAV 1 - DME/DME/IRU or GPS.
 RADAR required.



- NOTE: STAR limited to jet and multi-engine aircraft capable of 210K or greater.
- NOTE: This procedure has extended routes over water.
- NOTE: BRIGS transition, ATC assigned only.
- NOTE: KEYED transition, ATC assigned only.
- NOTE: MAEVE transition, ATC assigned only.
- NOTE: RADDs transition, ATC assigned only.
- NOTE: WAALK transition, ATC assigned only.

NOTE: Chart not to scale.

ARRIVAL ROUTE DESCRIPTION

- BRIGS TRANSITION (BRIGS.EEGOR1)
- DUNEE TRANSITION (DUNEE.EEGOR1)
- KALDA TRANSITION (KALDA.EEGOR1)
- KEYED TRANSITION (KEYED.EEGOR1)
- MAEVE TRANSITION (MAEVE.EEGOR1)
- RADDs TRANSITION (RADDs.EEGOR1)
- WAALK TRANSITION (WAALK.EEGOR1)

LANDING ALL AIRPORTS: From EEGOR on track 289° to ALIXX, then on track 289° to RYMES, then on track 289°. Expect RADAR vectors to final approach course.

EEGOR ONE ARRIVAL (RNAV)

WHITE PLAINS, NEW YORK

NE-2, 11 JUN 2026 to 09 JUL 2026

NE-2, 11 JUN 2026 to 09 JUL 2026