

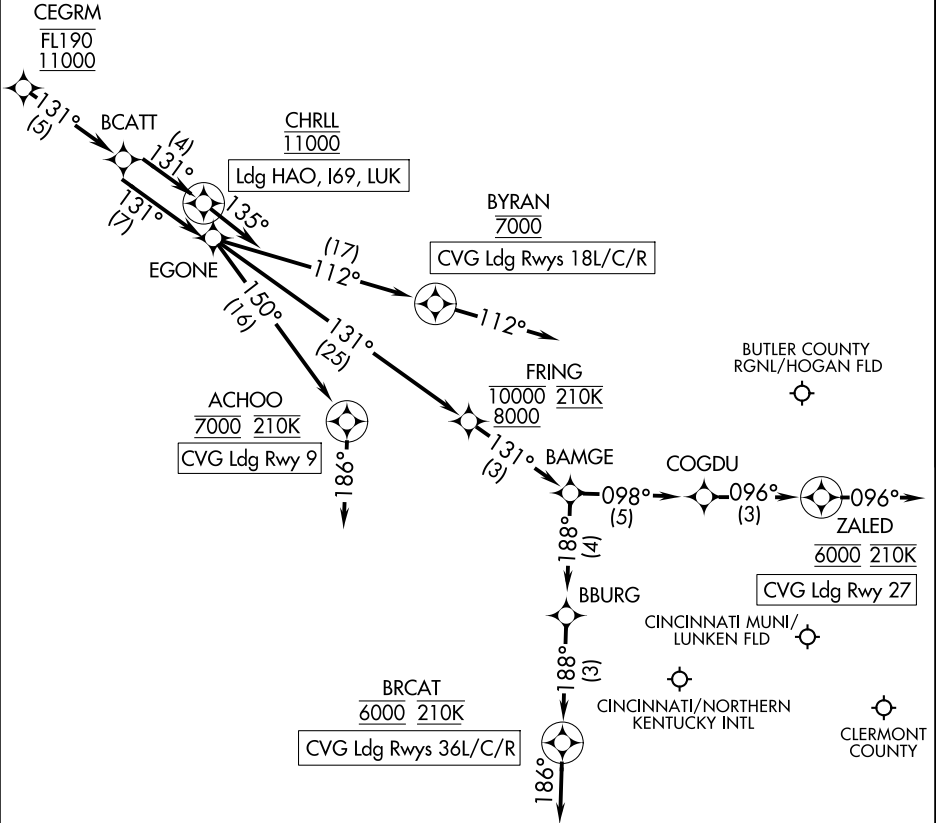
CEGRM EIGHT ARRIVAL (RNAV) Arrival Routes

COVINGTON, KENTUCKY

CINCINNATI APP CON
 119.7 363.15 (090°-269°)
 123.875 363.15 (270°-089°)
 CVG D-ATIS
 134.375
 LUK ATIS
 123.6

RNAV 1 - DME/DME/IRU or GPS.

RADAR required.



NOTE: ELANR TRANSITION for use by Chicago area departures only or as assigned by ATC.

(CONTINUED ON FOLLOWING PAGE)

NOTE: Chart not to scale.

CEGRM EIGHT ARRIVAL (RNAV) Arrival Routes

COVINGTON, KENTUCKY

SE-1, 11 JUN 2026 to 09 JUL 2026

SE-1, 11 JUN 2026 to 09 JUL 2026