

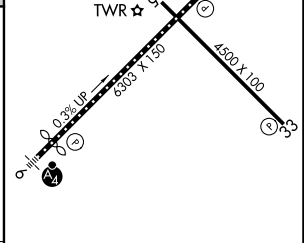
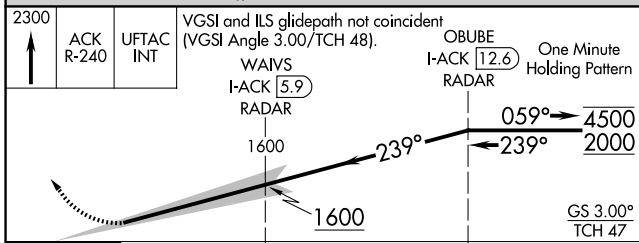
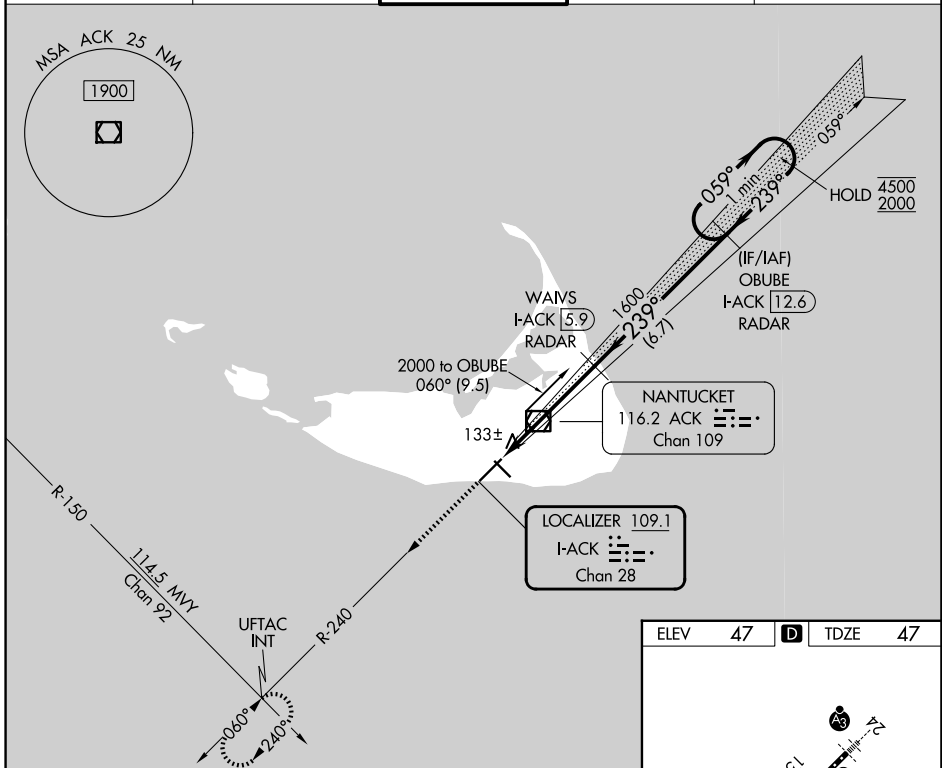
LOC/DME I-ACK 109.1 Chan 28	APP CRS 239°	Rwy Ldg TDZE Apt Elev 6303 47 47
---	------------------------	--

ILS RWY 24 (SA CAT I)

NANTUCKET MEML (ACK)

DME or RADAR required.		SSALR 	MISSED APPROACH: Climb to 2300 on ACK VOR/DME R-240 to UFTAC INT and hold.
Procedure NA when control tower closed. Requires specific OPSPEC, MSPEC, or LOA approval.			

ATIS 127.5	BOSTON APP CON 126.1 318.1	NANTUCKET TOWER ★ 118.3 (CTAF) 0	GND CON 132.5	UNICOM 122.95
----------------------	--------------------------------------	--	-------------------------	-------------------------



2300	ACK R-240	UFTAC INT	VGSIs and ILS glidepath not coincident (VGSIs Angle 3.00/TCH 48).		OBUBE I-ACK 12.6 RADAR	One Minute Holding Pattern
			WAIVS I-ACK 5.9 RADAR			

CATEGORY	A	B	C	D
S-ILS 24	RA 141/14 150		DA 197	

ELEV	47	TDZE	47
TDZL/RCLS Rwy 24 HIRL Rwy 6-24 0 MIRL Rwy 15-33 0 REIL Rwy 15 and 33			

NE-1, 11 JUN 2026 to 09 JUL 2026

NE-1, 11 JUN 2026 to 09 JUL 2026