

ACK VOR/DME 116.2 Chan 109	APP CRS 240°	Rwy Ldg 6303 TDZE 48 Apt Elev 48
--	------------------------	---

VOR RWY 24

NANTUCKET MEML (ACK)

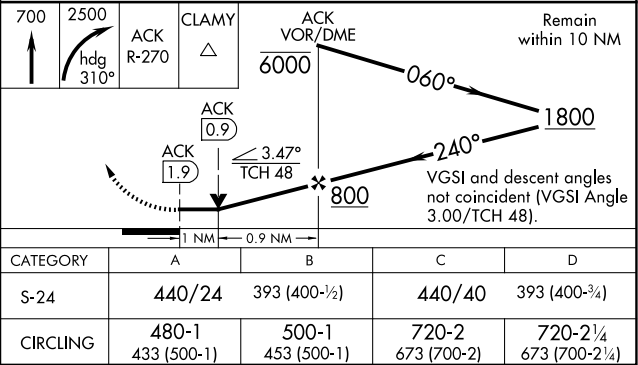
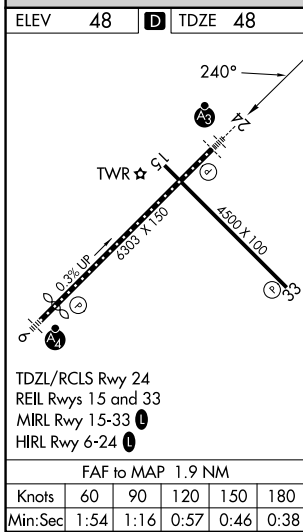
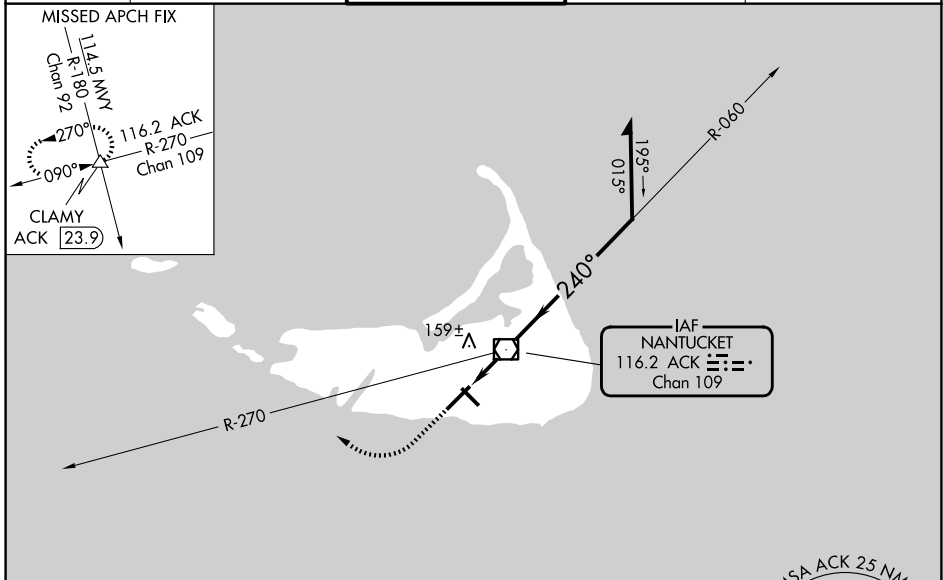
⚠ When local altimeter setting not received, use HYA altimeter setting and increase all MDAs 80 feet and S-24 visibility Cat C and D to RVR 5000 and increase Circling visibility Cats C and D ¼ SM. For inoperative SSALR: for inop ALS, increase S-24 Cats C and D visibility to RVR 6000. For inop ALS when using HYA altimeter setting, increase S-24 Cats C and D visibility to 1 ¾.

SSALR



MISSED APPROACH: Climb to 700 then climbing right turn to 2500 via heading 310° and ACK VOR/DME R-270 to CLAMY INT/ACK 23.9 DME and hold.

ATIS 127.5	BOSTON APP CON 126.1 318.1	NANTUCKET TOWER ★ 118.3 (CTAF) 0	GND CON 132.5	UNICOM 122.95
----------------------	--------------------------------------	--	-------------------------	-------------------------



NE-1, 11 JUN 2026 to 09 JUL 2026

NE-1, 11 JUN 2026 to 09 JUL 2026