

SW-4, 11 JUN 2026 to 09 JUL 2026

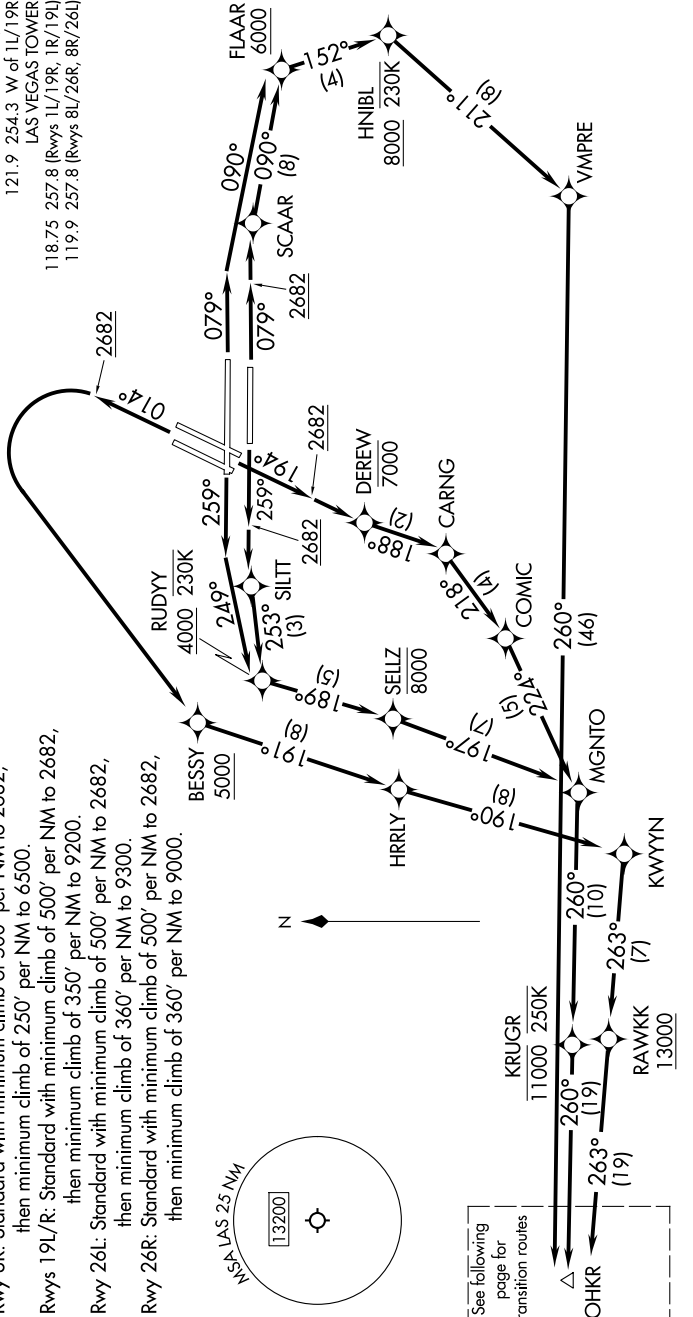
**TOP ALTITUDE:
FL190**

RNAV 1 - DME/DME/IRU or GPS.
RADAR required for non-GPS equipped aircraft.

TAKEOFF MINIMUMS

- Rwy 1L: Standard with minimum climb of 514' per NM to 8700.
- Rwy 1R: Standard with minimum climb of 526' per NM to 8700.
- Rwy 8L: Standard with minimum climb of 500' per NM to 2682, then minimum climb of 360' per NM to 10500.
- Rwy 8R: Standard with minimum climb of 500' per NM to 2682, then minimum climb of 250' per NM to 6500.
- Rwys 19L/R: Standard with minimum climb of 500' per NM to 2682, then minimum climb of 350' per NM to 9200.
- Rwy 26L: Standard with minimum climb of 500' per NM to 2682, then minimum climb of 360' per NM to 9300.
- Rwy 26R: Standard with minimum climb of 500' per NM to 2682, then minimum climb of 360' per NM to 9000.

LAS VEGAS DEP CON 125.9 307.25
D-ATIS 132.4
CLNC DEL 118.0
CPD/C 118.0
GND.CON 121.1 270.8 E of 1R/19L
121.9 254.3 W of 1L/19R
LAS VEGAS TOWER 118.75 257.8 (Rwys 1L/19R, 1R/19L)
119.9 257.8 (Rwys 8L/26R, 8R/26L)



See following page for transition routes

△ JOHKR

NOTE: Chart not to scale.

(CONTINUED ON FOLLOWING PAGE)

SW-4, 11 JUN 2026 to 09 JUL 2026