

(JOHKR5.JOHKR) 24361

# JOHKR FIVE DEPARTURE (RNAV)

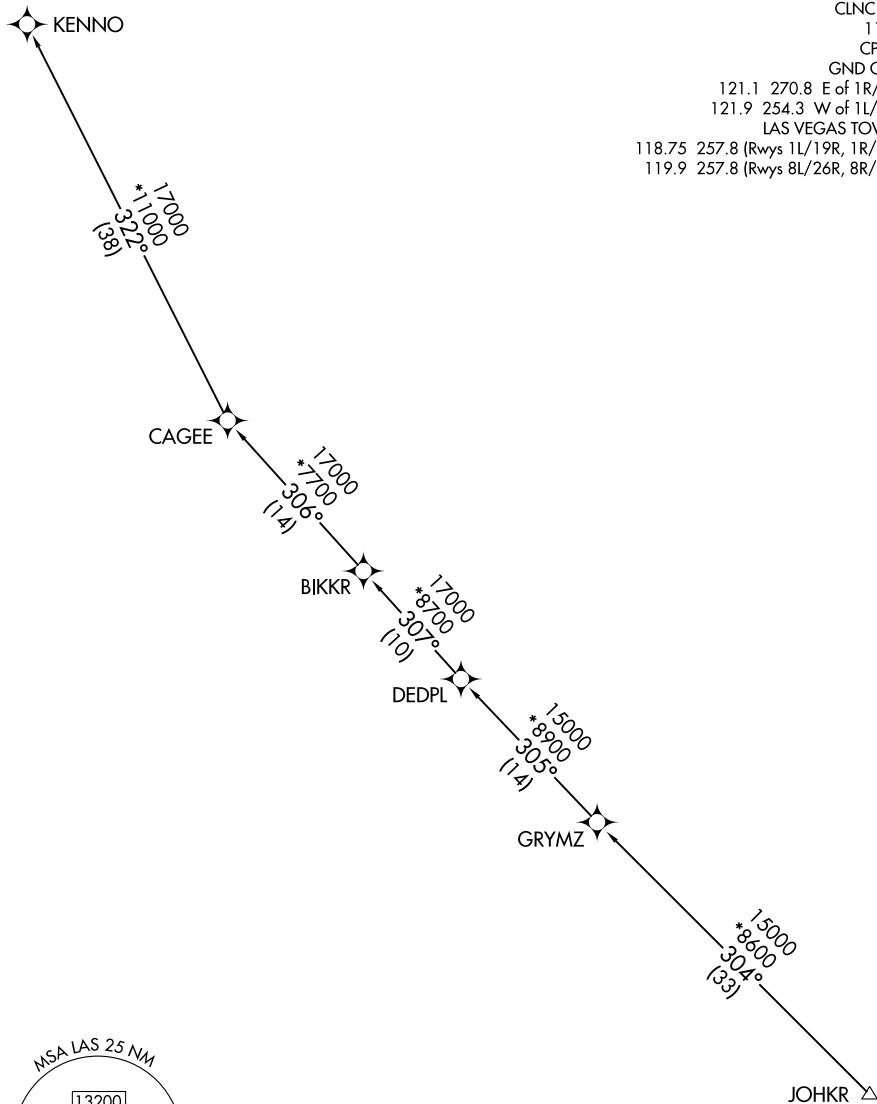
AL-662 (FAA)  
Transition Routes

HARRY REID INTL (LAS)  
LAS VEGAS, NEVADA

RNAV 1 - DME/DME/IRU or GPS.  
RADAR required for non-GPS equipped aircraft.

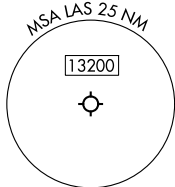
**TOP ALTITUDE:**  
**FL190**

LAS VEGAS DEP CON  
125.9 307.25  
D-ATIS  
132.4  
CLNC DEL  
118.0  
CPDLC  
GND CON  
121.1 270.8 E of 1R/19L  
121.9 254.3 W of 1L/19R  
LAS VEGAS TOWER  
118.75 257.8 (Rwys 1L/19R, 1R/19L)  
119.9 257.8 (Rwys 8L/26R, 8R/26L)



SW-4, 11 JUN 2026 to 09 JUL 2026

SW-4, 11 JUN 2026 to 09 JUL 2026



(CONTINUED ON FOLLOWING PAGE)

NOTE: Chart not to scale.

# JOHKR FIVE DEPARTURE (RNAV)

Transition Routes

LAS VEGAS, NEVADA  
HARRY REID INTL (LAS)

(JOHKR5.JOHKR) 26DEC24