

# RKSTR FOUR ARRIVAL (RNAV) Transition Routes

RNAV 1 - DME/DME/IRU or GPS.  
RADAR required.

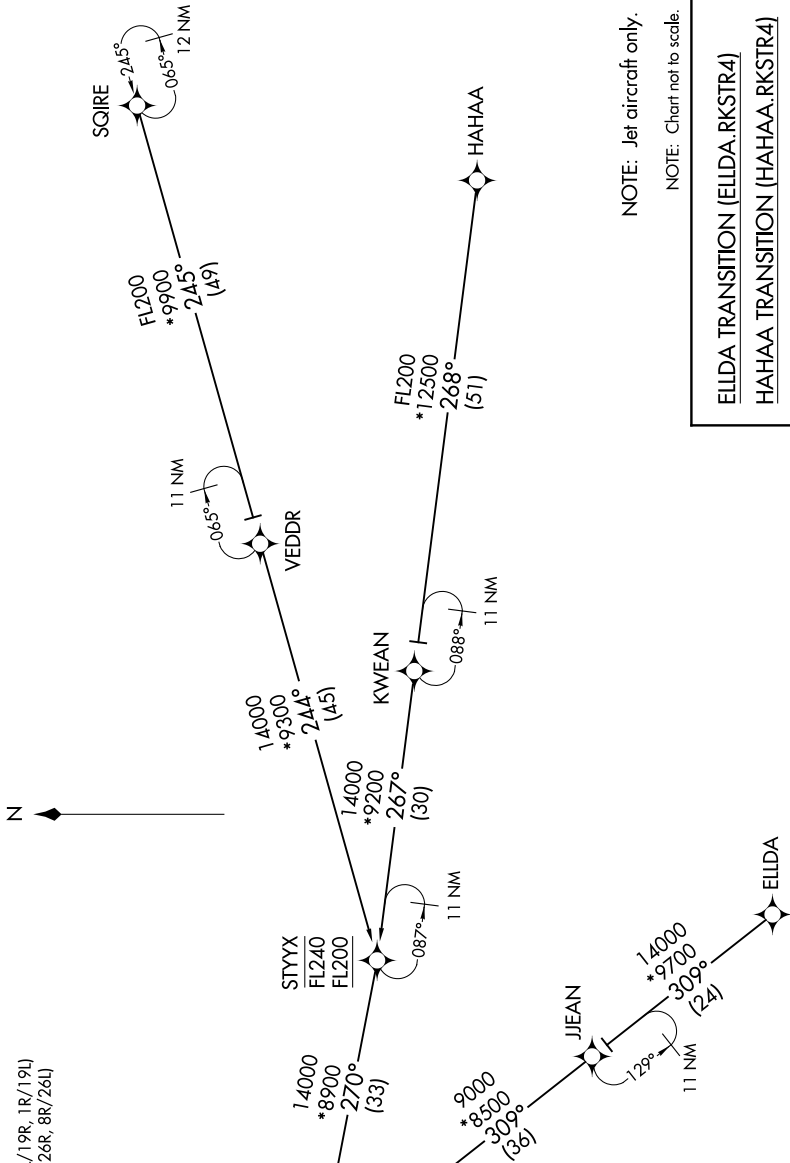
SW-4, 11 JUN 2026 to 09 JUL 2026

LAS VEGAS APP CON  
119.775 282.2  
D-ATIS  
132.4  
LAS VEGAS TOWER  
118.75 257.8 (Rwys 1L/19R, 1R/19L)  
119.9 257.8 (Rwys 8L/26R, 8R/26L)

See following page  
for arrival routes.

PEHTY
16000 250K
14000

10 NM  
288°  
108°



NOTE: Jet aircraft only.

NOTE: Chart not to scale.

ELDDA TRANSITION (ELDDA.RKSTR4)  
HAHAA TRANSITION (HAHAA.RKSTR4)  
SQIRE TRANSITION (SQIRE.RKSTR4)

(CONTINUED ON FOLLOWING PAGE)

SW-4, 11 JUN 2026 to 09 JUL 2026