

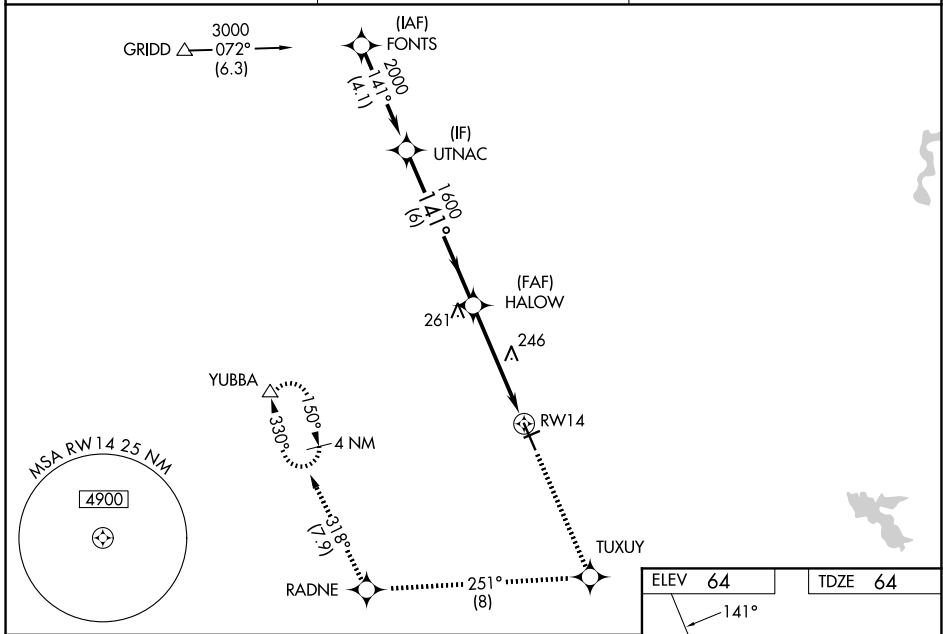
WAAS CH 42814	APP CRS 141°	Rwy Ldg TDZE 64	6007
W14A		Apf Elev 64	

RNAV (GPS) RWY 14

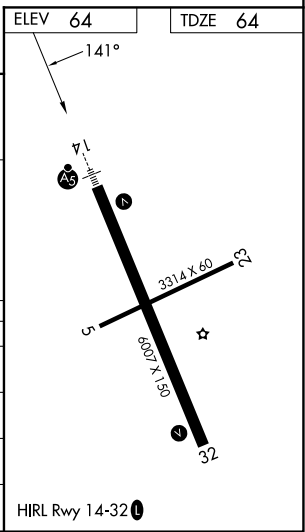
YUBA COUNTY (MYV)

RNP APCH - GPS.		MISSED APPROACH: Climb to 4000 direct TUXUY and on track 251° to RADNE and on track 318° to YUBBA and hold, continue climb-in-hold to 4000.
⚠ Circling Rwy 5, 23 NA at night. Baro-VNAV and VDP NA when using LHM altimeter setting. ⚠ For uncompensated Baro-VNAV systems, LNAV/VNAV NA below -2°C or above 54°C. Inop table does not apply to LPV all Cats and LNAV Cats A/B. For inop ALS, increase LNAV/VNAV all Cats visibility to 1½ SM, increase LNAV Cat C/D visibility to 1¼ SM. When local altimeter setting not received, use LHM altimeter setting and increase LPV DA to 307 feet. Increase LNAV/VNAV DA to 513 feet. Increase all MDAs 60 feet.		

ASOS 118.475	NORCAL APP CON 125.4 259.1	UNICOM 123.05 (CTAF) 0
------------------------	--------------------------------------	----------------------------------



UTNAC	4000	TUXUY	tr 251°	RADNE	tr 318°	YUBBA
2000	↑	◆	◆	◆	△	
GP 3.00° TCH 51	141°	HALOW 1600	1.2 NM to RWY14	RWY14		
	1600					
	6 NM	3.4 NM	1.2 NM			
CATEGORY	A	B	C	D		
LPV DA		264-1	200 (200-1)			
LNAV/VNAV DA		470-1	406 (500-1)			
LNAV MDA		500-1	436 (500-1)			
CIRCLING	540-1	476 (500-1)	560-1½ 496 (500-1½)	640-2 576 (600-2)		



SW-2, 11 JUN 2026 to 09 JUL 2026

SW-2, 11 JUN 2026 to 09 JUL 2026