

WAAS CH <b>87014</b> <b>W32A</b>	APP CRS <b>321°</b>	Rwy Ldg <b>6007</b> TDZE <b>64</b> Apt Elev <b>64</b>
--	------------------------	---

# RNAV (GPS) RWY 32

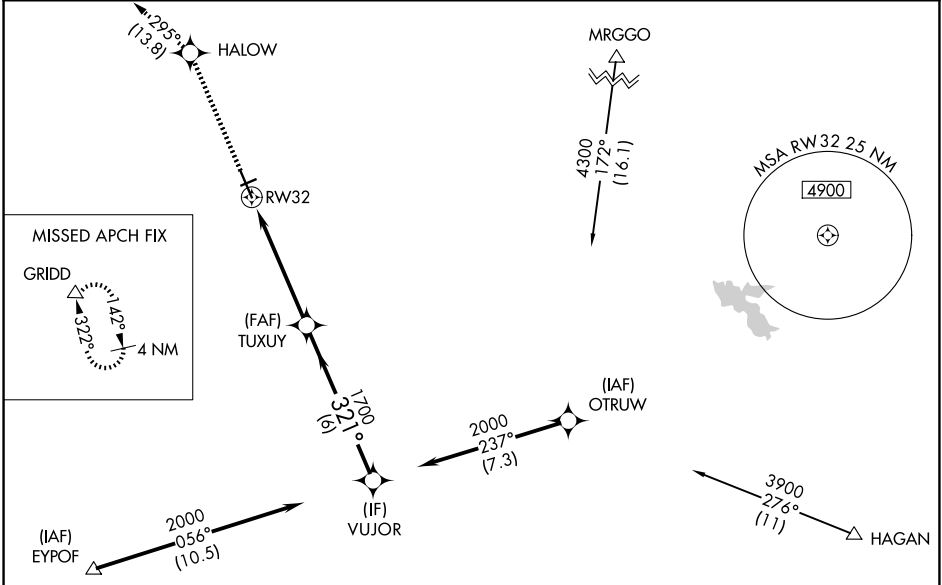
YUBA COUNTY (MYV)

RNP APCH - GPS.

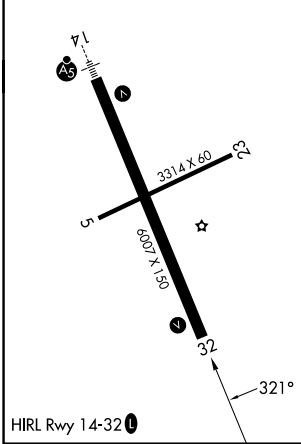
**⚠** Circling to Rwy 5, 23 NA at night. Baro-VNAV NA when using LHM altimeter setting.  
**⚠** For uncompensated Baro-VNAV systems, LNAV/VNAV NA below -2°C or above 54°C.  
 When local altimeter setting not received, use LHM altimeter setting and increase LPV DA to 357 feet; increase LNAV/VNAV DA to 418 feet; increase all MDAs 60 feet and LNAV visibility Cat C/D ½ SM.

MISSED APPROACH: Climb to 4000 direct HALOW and on track 295° to GRIDD and hold.

ASOS <b>118.475</b>	NORCAL APP CON <b>125.4 259.1</b>	UNICOM <b>123.05 (CTAF) 0</b>
------------------------	--------------------------------------	----------------------------------



ELEV 64	TDZE 64
---------	---------



4000	HALOW	tr 295°	GRIDD	VUJOR
↑	✧		△	
1.3 NM to RWY 32		1700		2000
1.3 NM		3.7 NM		6 NM
CATEGORY	A	B	C	D
LPV DA	314-1		250 (300-1)	
LNAV/VNAV DA	375-1½		311 (400-1½)	
LNAV MDA	540-1 476 (500-1)		540-1¼ 476 (500-1¼)	
CIRCLING	540-1 476 (500-1)		560-1½ 640-2 496 (500-1½) 576 (600-2)	

SW-2, 11 JUN 2026 to 09 JUL 2026

SW-2, 11 JUN 2026 to 09 JUL 2026