

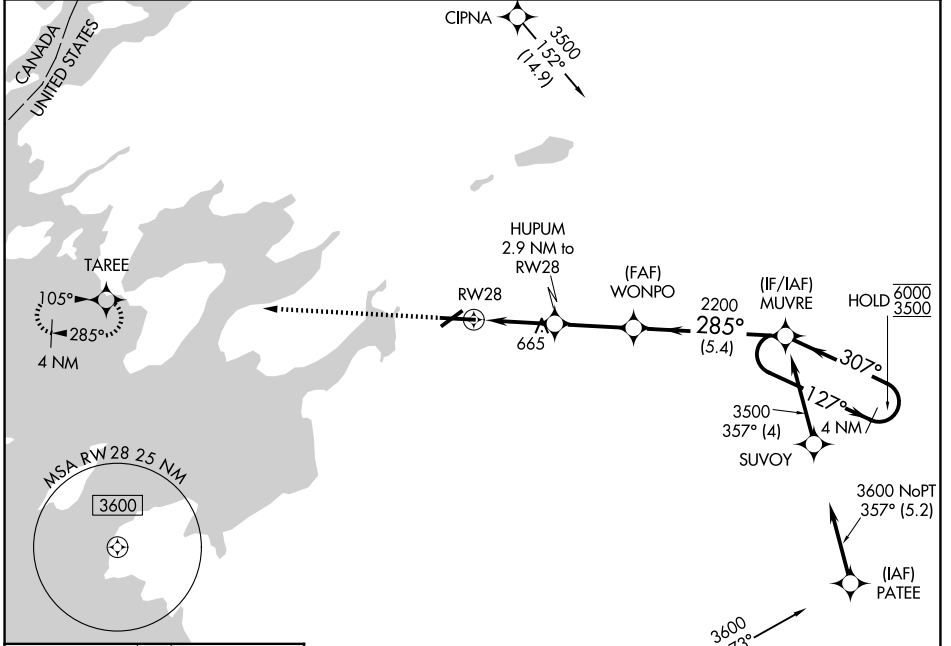
WAAS CH <b>82322</b>	APP CRS <b>285°</b>	Rwy Ldg TDZE Apt Elev	<b>7001</b> <b>331</b> <b>331</b>
-------------------------	------------------------	-----------------------------	---

# RNAV (GPS) RWY 28

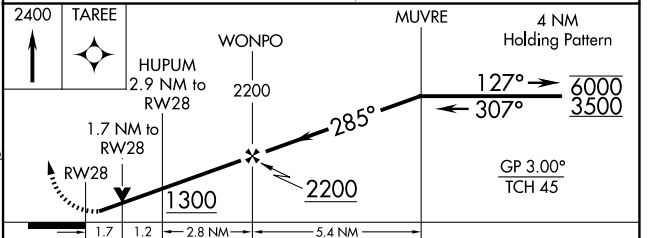
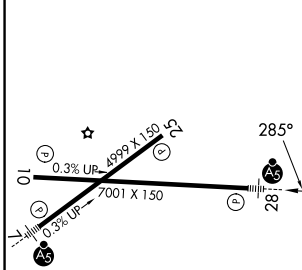
WATERTOWN INTL (ART)

RNP APCH - GPS.				MALS R	MISSED APPROACH: Climb to 2400 direct TAREE and hold.
<p>▼ Rwy 28 helicopter visibility reduction below ¾ SM NA. For uncompensated Baro-VNAV systems, LNAV/VNAV NA below -20°C or above 54°C. For inop ALS, increase LNAV Cats A/B visibility to 1 SM.</p>					

ASOS <b>132.325</b>	KGTB ATIS <b>119.525</b>	WHEELER-SACK APP CON <b>124.875 307.125</b>	CLNC DEL <b>120.8</b>	UNICOM <b>123.0 (CTAF)</b>
------------------------	-----------------------------	--	--------------------------	-------------------------------



ELEV 331	D	TDZE 331
----------	---	----------



CATEGORY	A		B		C		D
LPV DA			531-½		200 (200-½)		
LNAV/VNAV DA			852-1		521 (600-1)		
LNAV MDA	920-¾		589 (600-¾)		920-1¼		589 (600-1¼)
CIRCLING	920-1 589 (600-1)		960-1 629 (700-1)		980-1¾ 649 (700-1¾)		1080-2½ 749 (800-2½)

REIL Rwy 25  
HIRL Rwy 7-25  
MIRL Rwy 10-28

NE-2, 11 JUN 2026 to 09 JUL 2026

NE-2, 11 JUN 2026 to 09 JUL 2026