


| | | |
|--|------------------------|---|
| WAAS CH 61112 W15A | APP CRS 156° | Rwy Ldg 5255 TDZE 54 Apt Elev 54 |
|--|------------------------|---|

RNAV (GPS) RWY 15

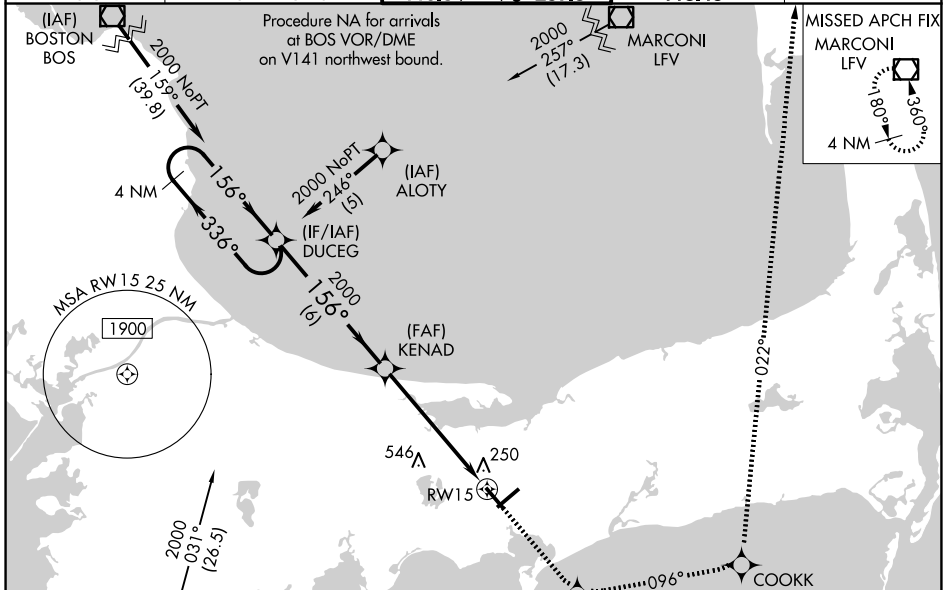
CAPE COD GATEWAY (HYA)

RNP APCH - GPS.

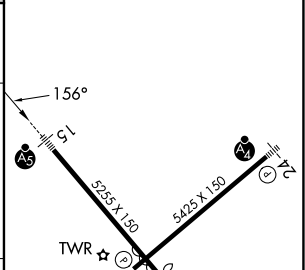
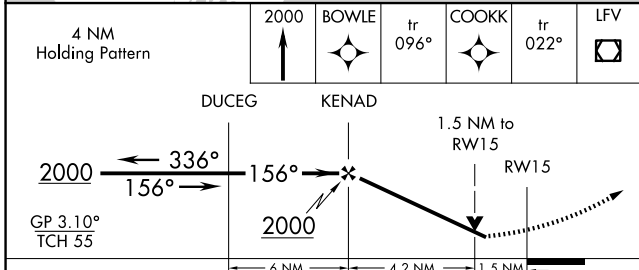
⚠ For uncompensated Baro-VNAV systems, LNAV/VNAV NA below -15°C or above 39°C.
 When local altimeter setting not received, use Chatham altimeter setting: increase LPV DA to 286 feet; increase LNAV/VNAV DA to 601 feet, visibility all Cats to RVR 6000; increase all MDAs 40 feet, LNAV visibility Cats C and D ½ SM, and Circling visibility Cats C and D ¼ SM.
 For inop ALS, increase LNAV/VNAV visibility all Cats to 1½ SM. Circling Rwy 24 at night, operational VGSI required, remain on or above VGSI glidepath until threshold. Rwy 15 helicopter visibility reduction below RVR 4000 NA. For inop ALS when using Chatham altimeter setting, increase LNAV Cats A and B visibility to RVR 5500. **RVR 1800 authorized with use of FD or AP or HUD to DA (NA when using Chatham altimeter setting).

MALSR

 MISSED APPROACH:
 Climb to 2000 direct BOWLE and on 096° track to COOKK and on 022° track to LFV VOR/DME and hold.

| | | | | |
|----------------------|--------------------------------------|--|--------------------------|-------------------------|
| ATIS 123.8 | BOSTON APP CON 118.2 284.6 | HYANNIS TOWER ★ 119.5 (CTAF) 0 257.8 | GND CON 118.45 | UNICOM 122.95 |
|----------------------|--------------------------------------|--|--------------------------|-------------------------|



| | |
|---------|---------|
| ELEV 54 | TDZE 54 |
|---------|---------|



| CATEGORY | A | B | C | D |
|--------------|--------|-------------|------------------------|------------------------|
| LPV DA** | | 254/24 | 200 (200-½) | |
| LNAV/VNAV DA | | 569/60 | 515 (600-1¼) | |
| LNAV MDA | 600/40 | 546 (600-¾) | 600/60 | 546 (600-1¼) |
| CIRCLING | 600-1 | 546 (600-1) | 860-2¼ 806 (900-2¼) | 860-2½ 806 (900-2½) |

REIL Rwy 6
 HIRL Rws 6-24 and 15-33

NE-1, 11 JUN 2026 to 09 JUL 2026

NE-1, 11 JUN 2026 to 09 JUL 2026