

WAAS CH 77812 W24A	APP CRS 246°	Rwy Ldg 5425 TDZE 43 Apt Elev 54
--	------------------------	---

RNAV (GPS) RWY 24

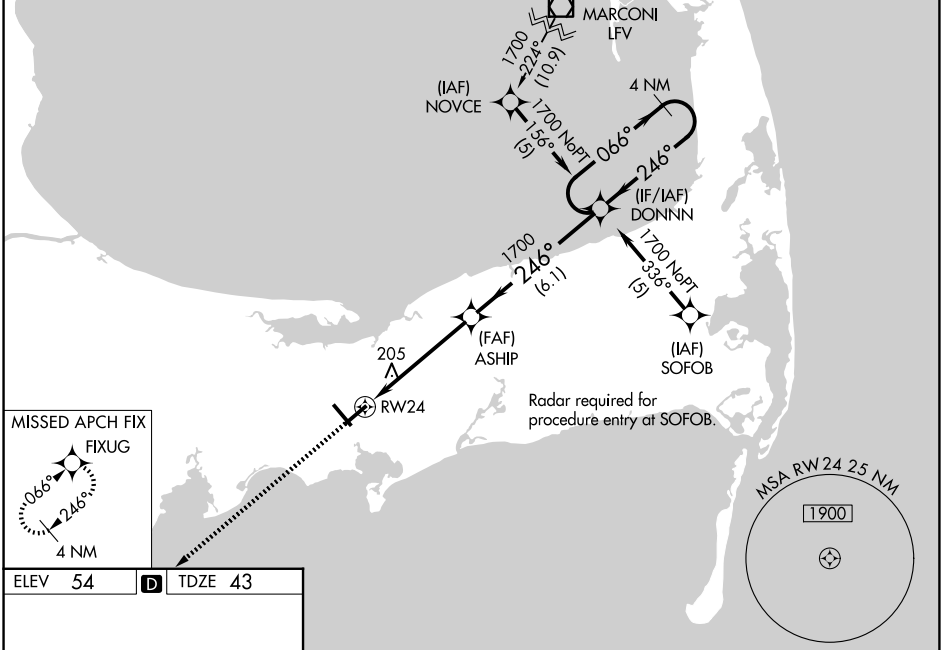
CAPE COD GATEWAY (HYA)

RNP APCH - GPS

▼ For uncompensated Baro-VNAV systems, LNAV/VNAV NA below -15°C or above 48°C. Rwy 24 helicopter visibility reduction below RVR 5000 NA. When local altimeter setting not received, use Chatham altimeter setting; increase LPV DA to 350 feet; increase LNAV/VNAV DA to 473 feet; increase all MDAs 40 feet, LNAV visibility Cats C and D to RVR 6000, and Circling visibility Cats C/D 1/2 SM. Baro-VNAV NA when using Chatham Muni altimeter setting. For inop ALS, increase LNAV/VNAV all Cats visibility to RVR 6000, LNAV Cat C/D visibility to 1 3/8 SM. Inop table does not apply to LPV all Cats, and LNAV Cats A and B. Straight in/Circling Rwy 24 at night, operational VGSI required, remain on or above VGSI glidepath until threshold. For inop ALS when using Chatham altimeter setting, increase LNAV/VNAV visibility all Cats to 1 1/2 SM.

MALSF
MISSED APPROACH:
Climb to 2000 direct
FIXUG and hold.

ATIS 123.8	BOSTON APP CON 118.2 284.6	HYANNIS TOWER ★ 119.5 (CTAF) 257.8	GND CON 118.45	UNICOM 122.95
----------------------	--------------------------------------	--	--------------------------	-------------------------



ELEV 54	D	TDZE 43
---------	----------	---------

REIL Rwy 6
HIRL Rws 6-24 and 15-33

2000 FIXUG

4 NM Holding Pattern

ASHIP DONNN

RW24

246° 066° 1700

1700

GP 3.00° TCH 50

5 NM 6.1 NM

CATEGORY	A	B	C	D
LPV DA		318/50	275 (300-1)	
LNAV/VNAV DA		441/50	398 (400-1)	
LNAV MDA		500/50	457 (500-1)	
CIRCLING	560-1 506 (600-1)	580-1 526 (600-1)	860-2 1/4 806 (900-2 1/4)	860-2 1/2 806 (900-2 1/2)

NE-1, 11 JUN 2026 to 09 JUL 2026

NE-1, 11 JUN 2026 to 09 JUL 2026