

WAAS CH 99423 W33A	APP CRS 336°	Rwy Ldg 5105 TDZE 50 Apt Elev 54
--	------------------------	---

RNAV (GPS) RWY 33

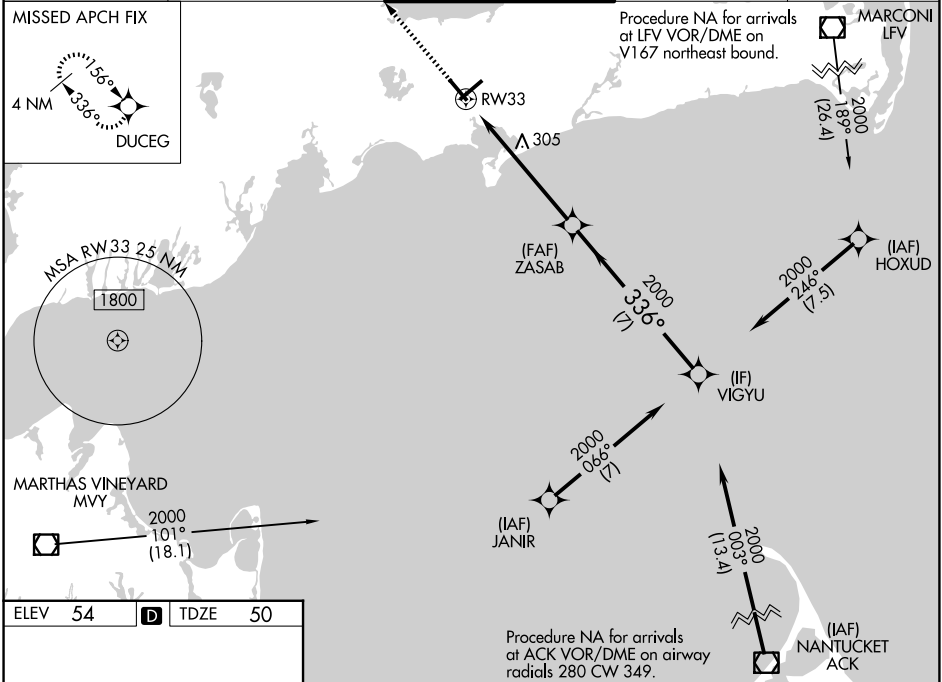
CAPE COD GATEWAY (HYA)

RNP APCH - GPS

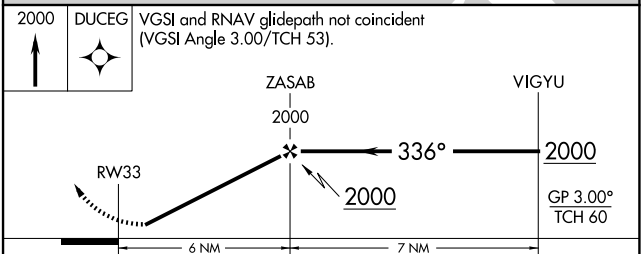
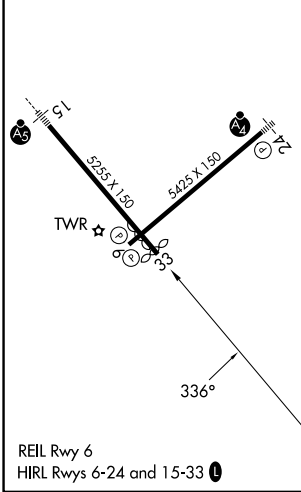
▼ Baro-VNAV NA when using Chatham altimeter setting. For uncompensated Baro-VNAV systems, LNAV/VNAV NA below -15°C or above 43°C. When local altimeter setting not received, use Chatham altimeter setting: increase LPV DA to 332 feet; increase LNAV/VNAV DA to 393 feet; increase all MDAs 40 feet and visibility Cats C and D ¼ SM. Rwy 33 helicopter visibility reduction below ¾ SM NA. Circling Rwy 24 at night, operational VGSI required, remain on or above VGSI glidepath until threshold.

MISSED APPROACH: Climb to 2000 direct DUCEG and hold.

ATIS 123.8	BOSTON APP CON 118.2 284.6	HYANNIS TOWER ★ 119.5 (CTAF) 257.8	GND CON 118.45	UNICOM 122.95
----------------------	--------------------------------------	--	--------------------------	-------------------------



ELEV 54	D	TDZE 50
---------	----------	---------



CATEGORY	A	B	C	D
LPV DA		300-1	250 (300-1)	
LNAV/VNAV DA		361-1	311 (400-1)	
LNAV MDA	620-1	570 (600-1)	620-1½	570 (600-1½)
CIRCLING	620-1	566 (600-1)	860-2¼ 806 (900-2¼)	860-2½ 806 (900-2½)

NE-1, 11 JUN 2026 to 09 JUL 2026

NE-1, 11 JUN 2026 to 09 JUL 2026