

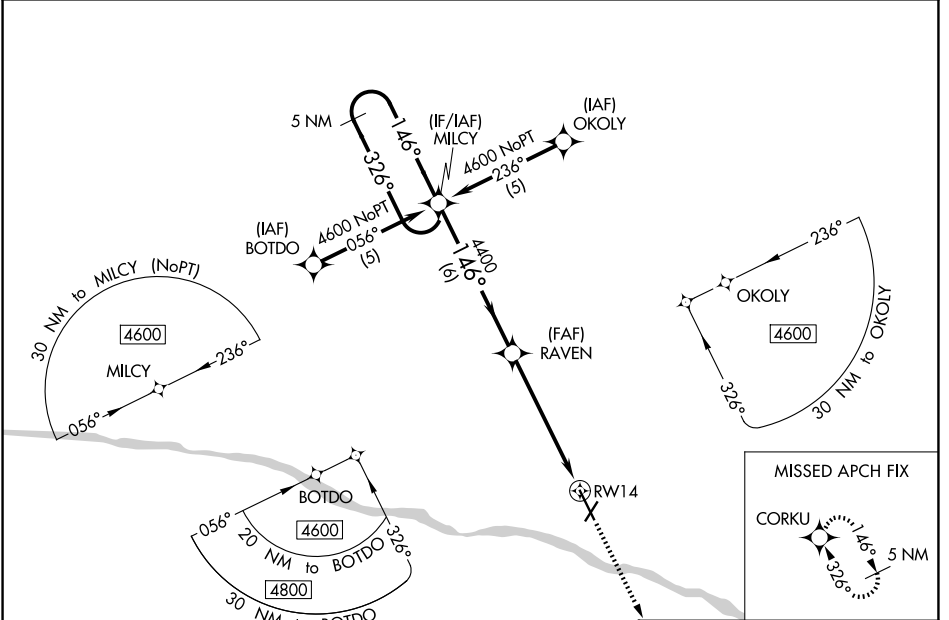
WAAS CH <b>65609</b> <b>W14A</b>	APP CRS <b>146°</b>	Rwy Ldg TDZE Apt Elev	<b>6329</b> <b>2586</b> <b>2596</b>
--	------------------------	-----------------------------	---

# RNAV (GPS) RWY 14

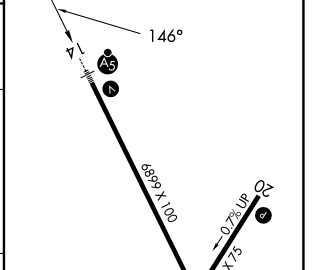
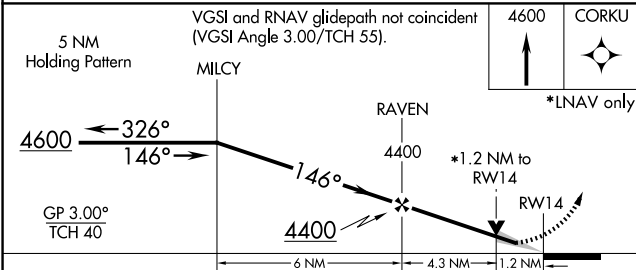
DODGE CITY RGNL (DDC)

<b>⚠</b> DME/DME RNP-0.3 NA. For uncompensated Baro-VNAV systems, LNAV/VNAV NA below -19°C (-2°F) or above 54°C (130°F). For inop ALS, increase LPV all Cats visibility to 7/8 SM and LNAV/VNAV all Cats visibility to 1 3/8 SM.	MALSR 	MISSED APPROACH: Climb to 4600 direct CORKU and hold.
--	-----------	---

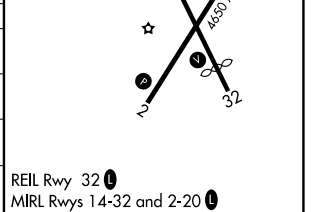
ASOS <b>118.525</b>	KANSAS CITY CENTER <b>125.2 285.425</b>	UNICOM <b>122.7 (CTAF) 0</b>
------------------------	--	---------------------------------



ELEV 2596	<b>D</b> TDZE 2586
-----------	--------------------



CATEGORY	A	B	C	D
LPV DA		2836-1/2	250 (300-1/2)	
LNAV/VNAV DA		2991-1	405 (400-1)	
LNAV MDA	3020-1/2	434 (500-1/2)	3020-3/4	434 (500-3/4)
CIRCLING	3040-1 444 (500-1)	3080-1 484 (500-1)	3320-2 724 (800-2)	3320-2 1/4 724 (800-2 1/4)



NC-2, 11 JUN 2026 to 09 JUL 2026

NC-2, 11 JUN 2026 to 09 JUL 2026