

# RNAV (GPS) RWY 18

APCH CRS	Rwy Idg	4499
180°	TDZE	562
	Arprt Elev	571

[USA]

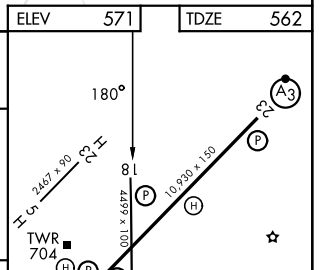
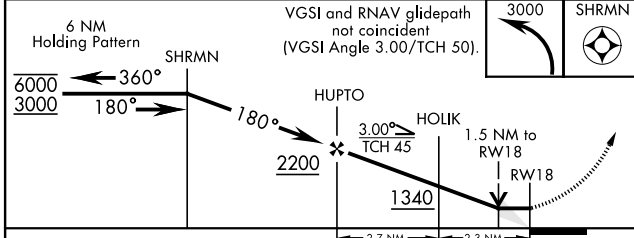
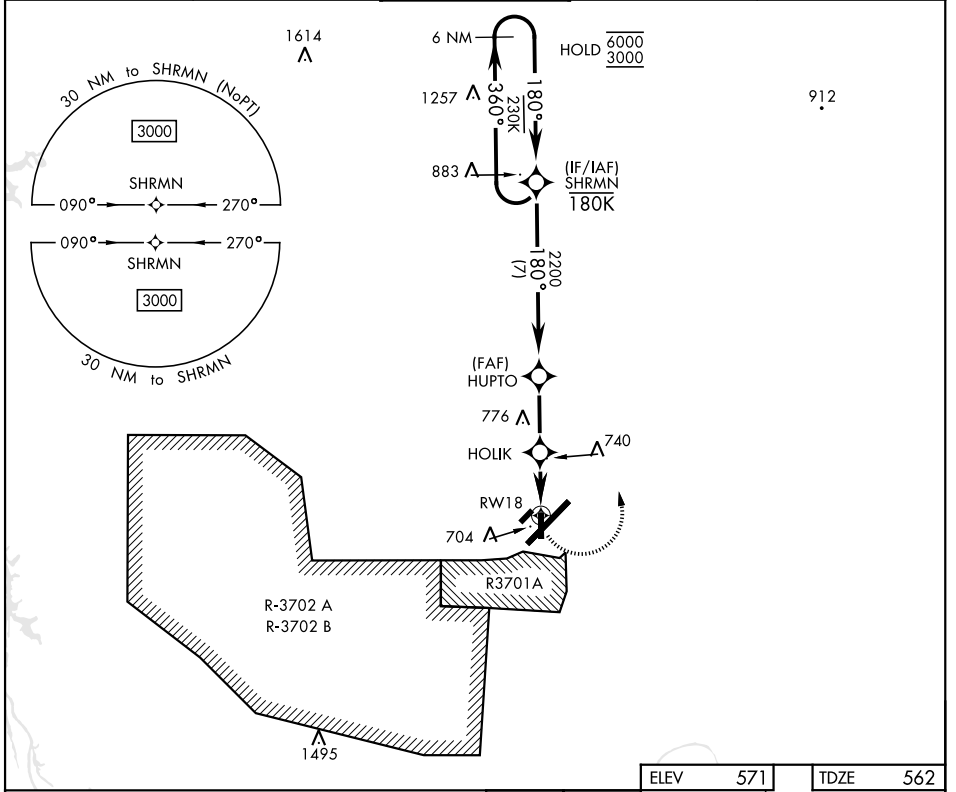
CAMPBELL AAF (FORT CAMPBELL) (KHOP)

RNP APCH-GPS

\* Circling not authorized SE of Rwy 5-23.

MISSED APPROACH: Climbing left turn to 3000 direct SHRMN and hold.

ATIS <b>125.175 308.4</b>	APP CON <b>118.1 269.525</b>	TOWER <b>120.9 278.8</b>	GND CON <b>121.8 266.8</b>	ASR/PAR
------------------------------	---------------------------------	-----------------------------	-------------------------------	---------



CATEGORY	A	B	C	D
LNVA MDA	1080-1	518 (600-1)	1080-1 $\frac{3}{8}$ 518 (600-1 $\frac{3}{8}$ )	NOT AUTHORIZED
CIRCLING*	1080-1	509 (600-1)	1080-1 $\frac{1}{2}$ 509 (600-1 $\frac{1}{2}$ )	NOT AUTHORIZED

ELEV	571	TDZE	562
------	-----	------	-----

HIRL all rwys

# RNAV (GPS) RWY 18

SE-1, 11 JUN 2026 to 09 JUL 2026

SE-1, 11 JUN 2026 to 09 JUL 2026