

HOPKINSVILLE, KENTUCKY

RNAV (GPS) RWY 23

WAAS CH 56203 W23A	APCH CRS 225°	Rwy ldg TDZE Arprt Elev	10,930 571 571
--------------------------	------------------	-------------------------------	----------------------

(USA)

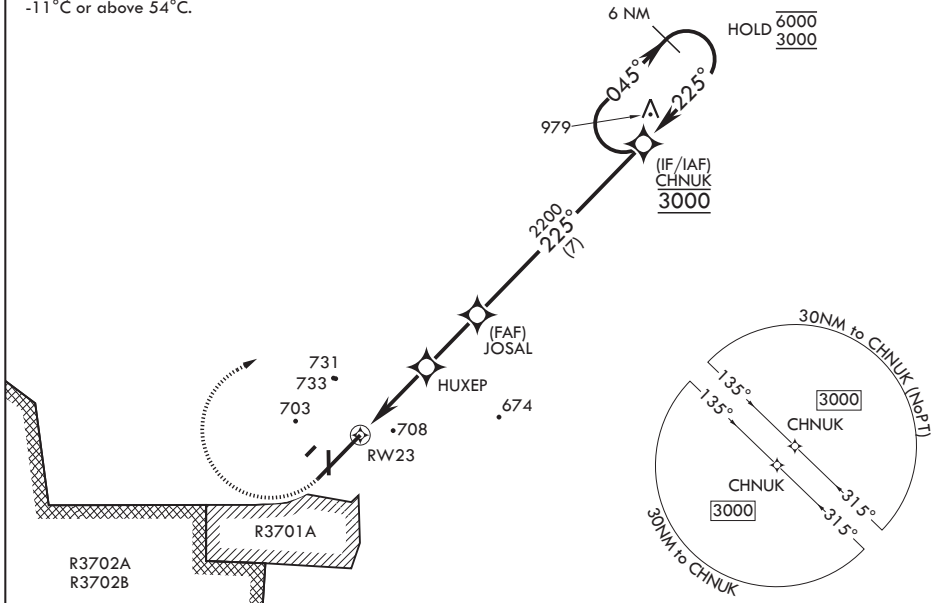
CAMPBELL AAF (FORT CAMPBELL) (KHOP)

RNP APCH-GPS	SSALR A3	MISSED APPROACH: Climb to 1200, then climbing right turn to 3000 direct CHNUK and hold.
<p>* When ALS inop, increase RVR to 40, vis to 3/4 mile. ** When ALS inop, increase RVR to 55, vis to 1 mile. *** When ALS inop, increase CAT AB RVR to 55, vis to 1 mile; CAT CDE RVR to 60, vis to 1 1/8 miles.</p>		

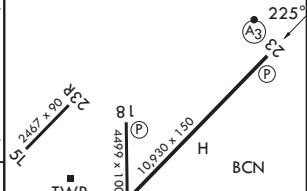
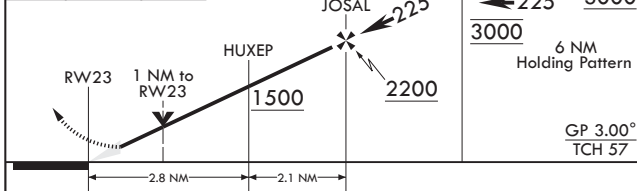
ATIS 125.175 308.4	APP CON 118.1 269.525	TOWER 120.9 278.8	GND CON 121.8 266.8	ASR/PAR
-----------------------	--------------------------	----------------------	------------------------	---------

**** Circling NA SE of Rwy 05-23.

For uncompensated
BARO-VNAV systems,
LNAV/VNAV NA below
-11°C or above 54°C.



1200	3000	CHNUK	VGSI and RNAV glidepath not coincident (VGSI Angle 3.00/TCH 78)	CHNUK	ELEV 571	TDZE 571
------	------	-------	---	-------	----------	----------



CATEGORY	A	B	C	D	E
LPV DA*	771/24		200	(200-1/2)	
LNAV/VNAV DA**	945/35		374	(400-%)	
LNAV MDA***	960/24	389 (400-1/2)	960/35	389	(400-%)
CIRCLING****	1020-1 449 (500-1)	1040-1 469 (500-1)	1040-1 1/2 469 (500-1 1/2)	1140-2 569 (600-2)	



HOPKINSVILLE, KENTUCKY

36°40'N - 87°30'W

CAMPBELL AAF (FORT CAMPBELL) (KHOP)

Amdt 3 14MAY26

RNAV (GPS) RWY 23

SE-1, 11 JUN 2026 to 09 JUL 2026

SE-1, 11 JUN 2026 to 09 JUL 2026