

# TACAN RWY 23

TACAN HXW Chan 96	APCH CRS 228°	Rwy Idg 10,930
		TDZE 571
		Arprt Elev 571

[USA]

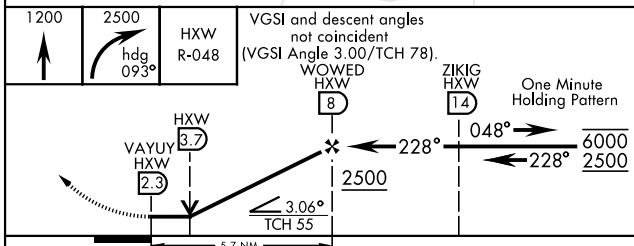
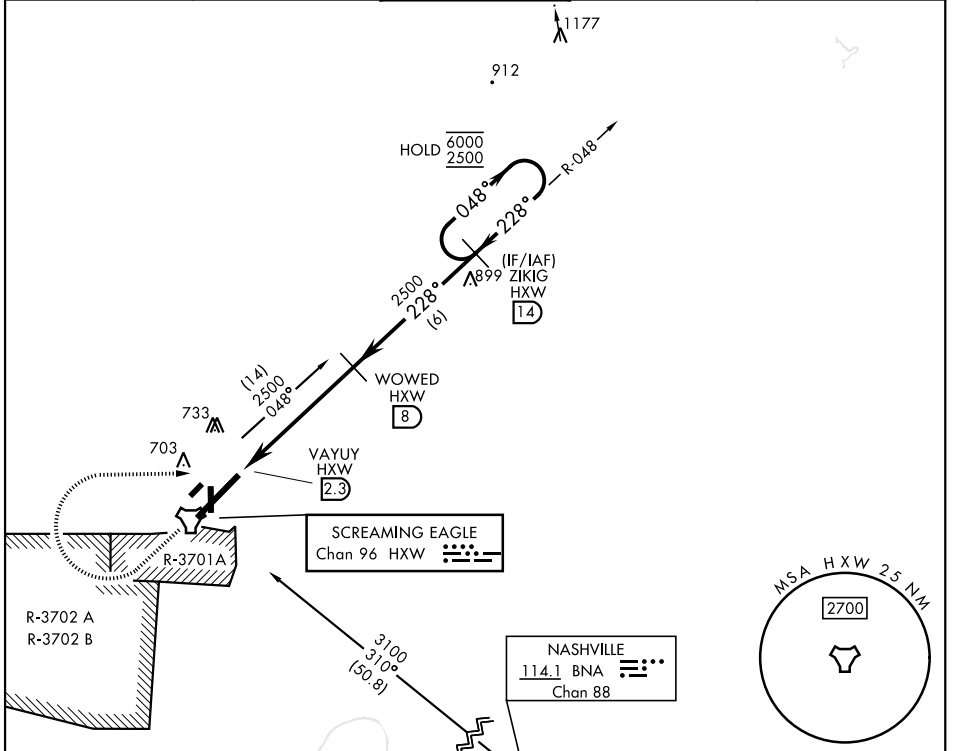
CAMPBELL AAF (FORT CAMPBELL) (KHOP)

\* When ALS inop, increase CAT AB RVR to 55, vis to 1 mile; CAT CDE vis to 1 3/8 miles.  
 \*\* Circling not authorized SE of Rwy 5-23.

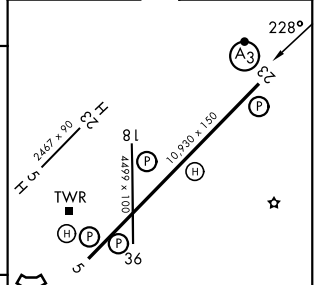


MISSED APPROACH: Climb to 1200 then climbing right turn to 2500 on hdg 093° to intercept HXW TACAN R-048 to ZIKIG/HXW 1.4 DME and hold.

ATIS 125.175 308.4	APP CON 118.1 269.525	TOWER 120.9 278.8	GND CON 121.8 266.8	ASR/PAR
-----------------------	--------------------------	----------------------	------------------------	---------



ELEV	571	TDZE	571
------	-----	------	-----



CATEGORY	A	B	C	D	E
S-23*	1080/24	509 (600-1/2)	1080/55	509 (600-1)	
CIRCLING**	1080-1	509 (600-1)	1080-1 1/2 509 (600-1 1/2)	1140-2	569 (600-2)

HIRL all rwys

# TACAN RWY 23

SE-1, 11 JUN 2026 to 09 JUL 2026

SE-1, 11 JUN 2026 to 09 JUL 2026