

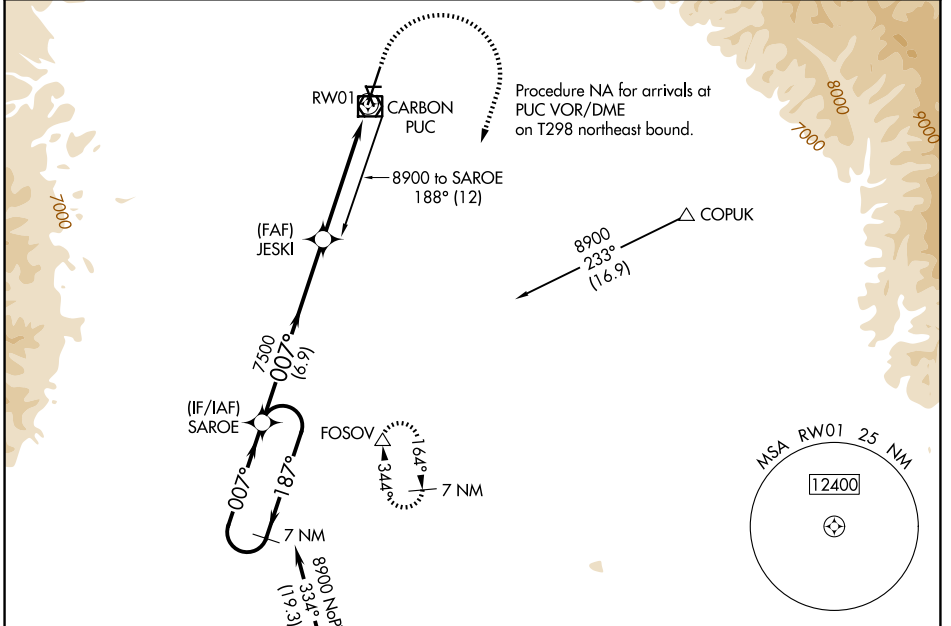
WAAS CH 78037 W01A	APP CRS 007°	Rwy Ldg 8316 TDZE 5862 Apt Elev 5958
--	------------------------	---

RNAV (GPS) RWY 1

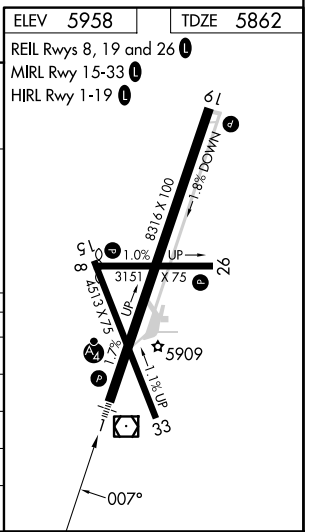
CARBON COUNTY RGNL/BUCK DAVIS FLD (PUC)

RNP APCH.	MALSF	MISSED APPROACH: Climb to 6300 then climbing right turn to 10000 direct FOSOV and hold, continue climb-in-hold to 10000. #Missed approach requires minimum climb of 296 feet per NM to 7500.
<p>▼ Circling NA at night. For inoperative</p> <p>▲ ALS increase LP Cat C/D visibility to 1 3/8 SM.</p>		

ASOS 135.425	SALT LAKE CENTER 133.9 370.85	UNICOM 122.8 (CTAF) 0
------------------------	---	---------------------------------



7 NM Holding Pattern	SAROE	JESKI	FOSOV	
8900	7500	6300	10000	
187°	007°	007°	1.2 NM to RW01	
6.9 NM	3.9 NM	1.2 NM		
CATEGORY	A	B	C	D
LP MDA #	6240-3/4		378 (300-3/4)	
LNAV MDA #	6260-3/4	398 (400-3/4)	6260-7/8	398 (400-7/8)
LP MDA	6320-3/4	458 (400-3/4)	6320-1	458 (400-1)
LNAV MDA	6500-3/4	638 (600-3/4)	6500-1 1/2	638 (600-1 1/2)
CIRCLING	6660-1 702 (800-1)	6860-1 1/4 902 (1000-1 1/4)	7120-3 1162 (1200-3)	NA



RNAV (GPS) RWY 1

SW-4, 11 JUN 2026 to 09 JUL 2026

SW-4, 11 JUN 2026 to 09 JUL 2026