

WAAS CH 97307 W13A	APP CRS 134°	Rwy Ldg TDZE Apt Elev	8599 4497 4497
--	------------------------	-----------------------------	---

RNAV (GPS) RWY 13

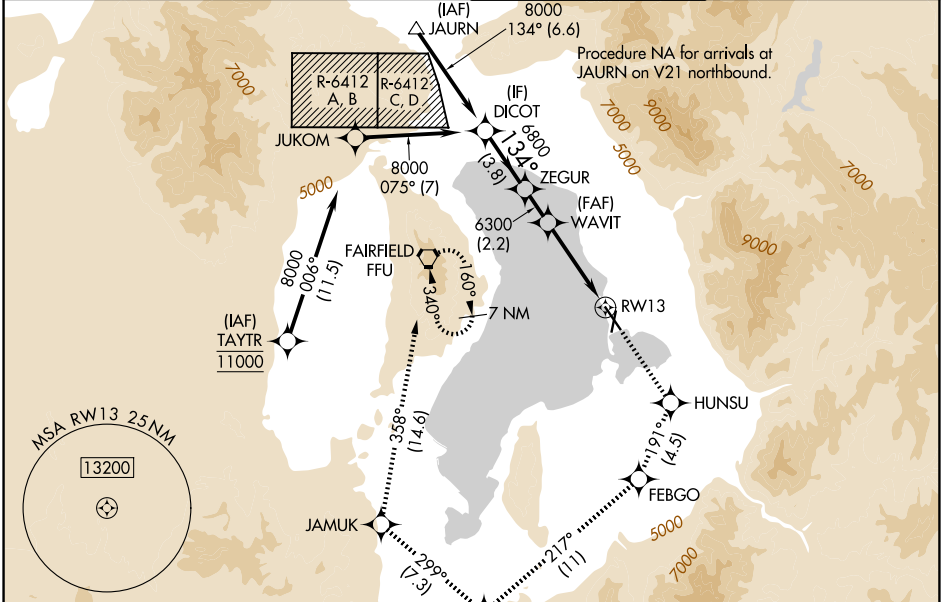
PROVO MUNI (PVU)

RNP APCH - GPS.

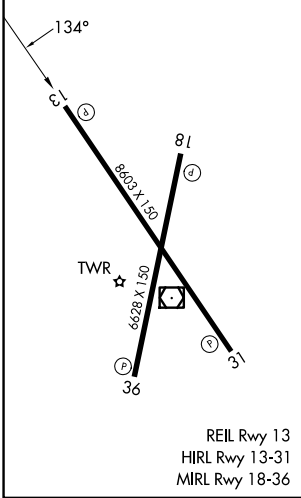
⚠ Rwy 13 helicopter visibility reduction below 3/4 SM NA. Circling Rwy 18, 36 NA at night. For uncompensated Baro-VNAV systems, LNAV/VNAV NA below -23°C or above 54°C. When local altimeter setting not received, procedure NA. Circling NA east of Rwy 18 and 31.

MISSED APPROACH: Climb to 9000 direct HUNSU and on track 191° to FEBGO and on track 217° to ZARAK and on track 299° to JAMUK and on track 358° to FFU VORTAC and hold. *Missed approach requires minimum climb of 215 feet per NM to 7760.

ATIS 135.175	SALT LAKE CITY APP CON 118.85 233.7	PROVO TOWER * 125.3 (CTAF)	GND CON 119.4
------------------------	---	--------------------------------------	-------------------------



ELEV 4497	D	TDZE 4497
-----------	----------	-----------



	9000 HUNSU	FEBGO	ZARAK	JAMUK	FFU
DICOT	↑	tr 191°	tr 217°	tr 299°	tr 358°
8000	ZEGUR	WAVIT	1.9 NM to RW13		
	6800	6300	RW13		
	GP 3.00° TCH 50				
	3.8 NM		2.2 NM		3.7 NM
CATEGORY	A	B	C	D	
LPV DA*	4756-3/4		259 (300-3/4)		
LNAV/VNAV DA*	4838-1		341 (400-1)		
LPV DA	4925-1 1/4		428 (500-1 1/4)		
LNAV/VNAV DA	4981-1 3/8		484 (500-1 3/8)		
LNAV MDA	5140-1 643 (700-1)		5140-1 7/8		643 (700-1 1/8)
CIRCLING	5140-1 643 (700-1)		5160-1 7/8		5280-2 1/2
			663 (700-1 7/8)		783 (800-2 1/2)

SW-4, 11 JUN 2026 to 09 JUL 2026

SW-4, 11 JUN 2026 to 09 JUL 2026