

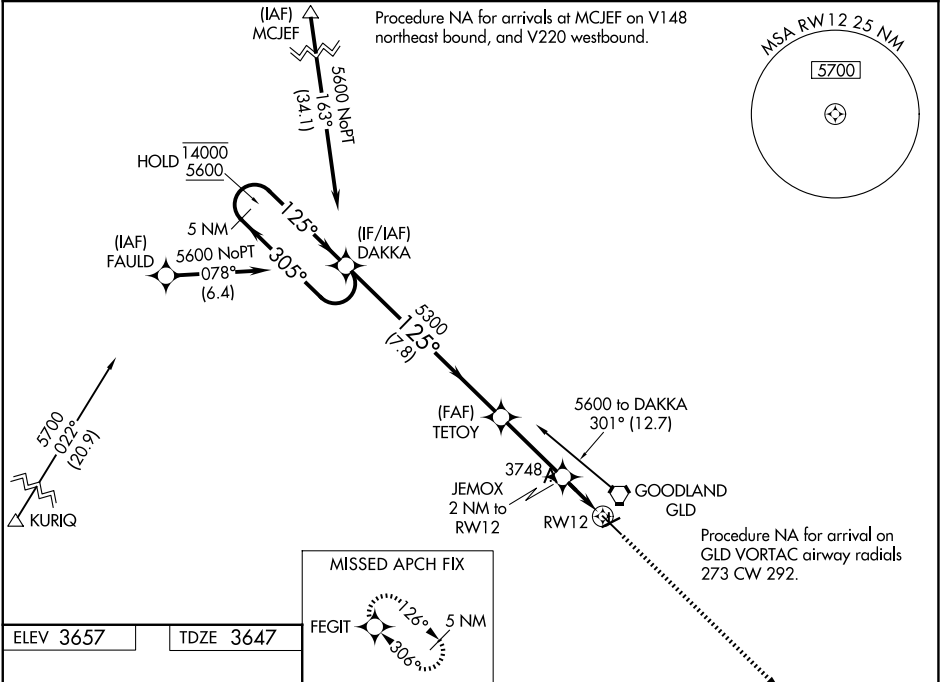
WAAS CH 65838 W12A	APP CRS 125°	Rwy Ldg TDZE Apt Elev	5499 3647 3657
--	------------------------	-----------------------------	---

RNAV (GPS) RWY 12

RENNER FLD/GOODLAND MUNI (GLD)

RNP APCH.
 ⚠ Circling NA to Rwy 17 and 35. Circling NA south of Rwy 5-30.
 ⚠ For uncompensated Baro-VNAV systems, procedure NA below -23°C or above 54°C.
 MISSED APPROACH: Climb to 5700 direct FEGIT and hold.

ASOS 121.025	DENVER CENTER 132.7 226.675	UNICOM 122.8 (CTAF) 0
------------------------	---------------------------------------	---------------------------------



	5 NM Holding Pattern		5700	FEGIT
	14000	5600	5700	FEGIT
GP 3.00°	305°	125°	5300	*LNAV only
TCH 40	5300	5300	JEMOX 2 NM to RW12	*1 NM to RW12
	7.8 NM	3.1 NM	1 NM	1 NM
REIL Rwy 12 0	MIRL Rwy 5-23 and 12-30 0			
CATEGORY	A	B	C	D
LPV DA		3897-1	250 (300-1)	
LNAV/VNAV DA		4021-1	374 (400-1)	
LNAV MDA		4000-1	353 (400-1)	
CIRCLING	4060-1 403 (500-1)	4120-1 463 (500-1)	4120-1½ 463 (500-1½)	4240-2 583 (600-2)

NC-2, 11 JUN 2026 to 09 JUL 2026

NC-2, 11 JUN 2026 to 09 JUL 2026