

WAAS CH 70644 W23A	APP CRS 234°	Rwy Ldg TDZE Apt Elev	4001 3652 3658
--	------------------------	-----------------------------	---

RNAV (GPS) RWY 23

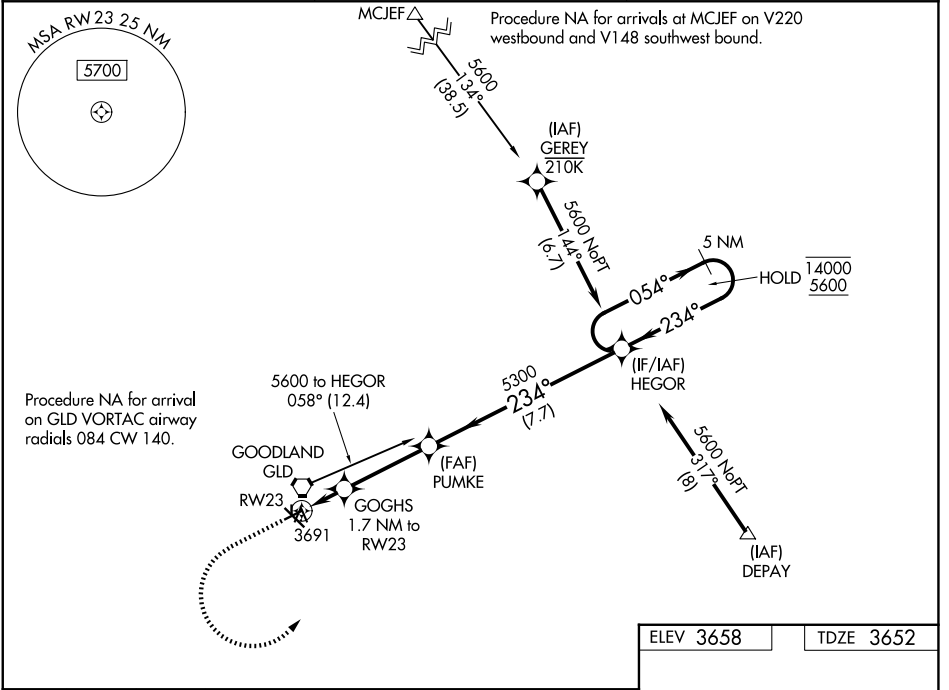
RENNER FLD/GOODLAND MUNI (GLD)

RNP APCH - GPS.

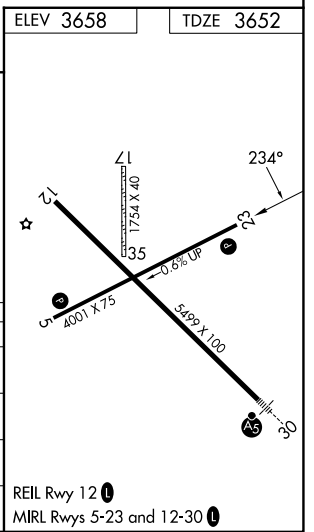
⚠ Circling NA to Rwy 17 and 35. Circling NA south of Rwy 5 and 30.
⚠ For uncompensated Baro-VNAV systems, LNAV/VNAV NA below -21°C or above 54°C. Circling Rwy 5 NA at night.

MISSED APPROACH: Climb to 4200 then climbing left turn to 5600 direct HEGOR and hold.

ASOS 121.025	DENVER CENTER 132.7 226.675	UNICOM 122.8 (CTAF) 0
------------------------	---------------------------------------	---------------------------------



4200	5600	HEGOR		
↑	↶	✦		
<p>PUMKE</p> <p>HEGOR</p> <p>5 NM Holding Pattern</p> <p>GOGHS 1.7 NM to RW23</p> <p>5300</p> <p>054° → 14000</p> <p>← 234° 5600</p> <p>GP 3.00°</p> <p>TCH 42</p> <p>1.1 NM</p> <p>0.6 NM</p> <p>3.4 NM</p> <p>7.7 NM</p> <p>4220</p> <p>5300</p>				
CATEGORY	A	B	C	D
LPV DA	3902-1	250 (300-1)		NA
LNAV/VNAV DA	3939-1	287 (300-1)		NA
LNAV MDA	4040-1	388 (400-1)	4040-1½ 388 (400-1½)	NA
CIRCLING	4080-1 422 (500-1)	4120-1 462 (500-1)	4120-1½ 462 (500-1½)	NA



NC-2, 11 JUN 2026 to 09 JUL 2026

NC-2, 11 JUN 2026 to 09 JUL 2026