

WAAS CH 48920 W30A	APP CRS 305°	Rwy Ldg TDZE 3653 Apt Elev 3657
----------------------------------------	------------------------	-----------------------------------------------------

RNAV (GPS) RWY 30

RENNER FLD/GOODLAND MUNI (G.LD)

RNP APCH.

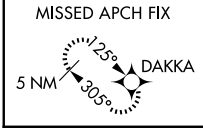
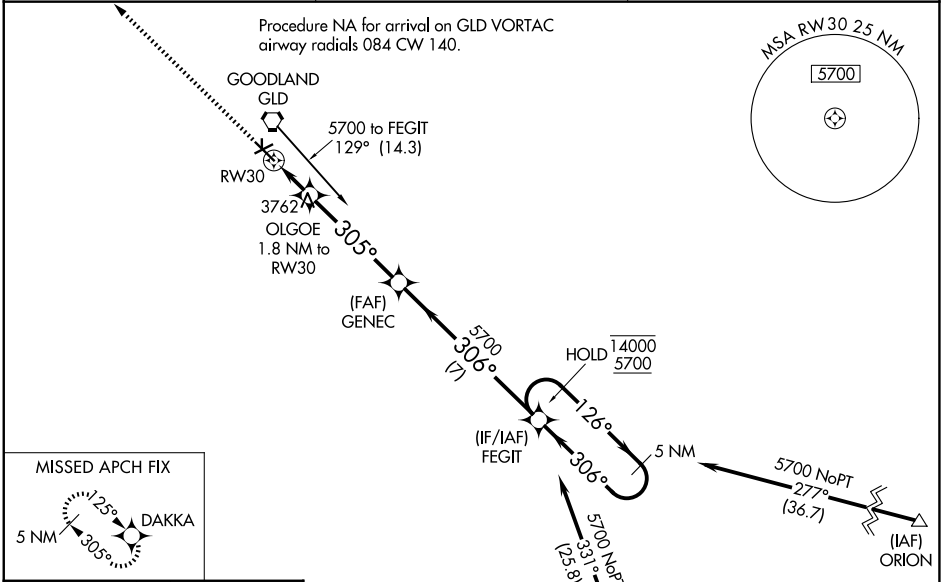
⚠ Circling NA to Rws 17 and 35. Circling NA south of Rws 5 and 30. Rwy 30 helicopter visibility reduction below 3/4 SM NA. Inop table does not apply. For uncompensated Baro-VNAV systems, LNAV/VNAV NA below -22°C or above 54°C.

MALSR

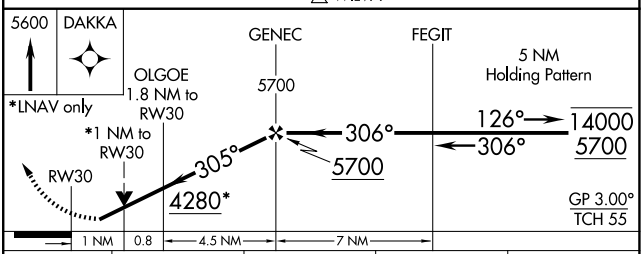
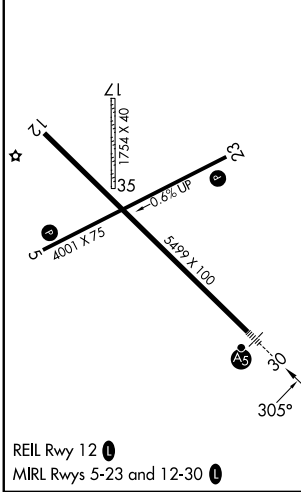


MISSED APPROACH: Climb to 5600 direct DAKKA and hold.

ASOS 121.025	DENVER CENTER 132.7 226.675	UNICOM 122.8 (CTAF)
------------------------	---------------------------------------	-------------------------------



ELEV 3657	TDZE 3653
-----------	-----------



CATEGORY	A	B	C	D
LPV DA		3903-1	250 (300-1)	
LNAV/VNAV DA		3903-1	250 (300-1)	
LNAV MDA		4020-1	367 (400-1)	
CIRCLING	4080-1 423 (500-1)	4120-1 463 (500-1)	4120-1½ 463 (500-1½)	4240-2 583 (600-2)

NC-2, 11 JUN 2026 to 09 JUL 2026

NC-2, 11 JUN 2026 to 09 JUL 2026